

LYSOZYME RABBIT MAB

货号: N262481

产品全名: Lysozyme 兔单克隆抗体

基因符号 LZM; LYZF1

UNIPROT ID: P61626

背景: Lysozymes have primarily a bacteriolytic function; those in tissues and body fluids are associated with the monocyte-macrophage system and enhance the activity of immunoagents.

抗原: A synthetic peptide of human Lysozyme

经过测试的应用: WB, ICC/IF, IP

推荐稀释比: WB: 1/500-1/1000 IF: 1/50-1/200 IP: 1/20

种属反应性: Rabbit

克隆性: Rabbit Monoclonal

克隆编号: R09-9D6

分子量: Calculated MW: 17 kDa; Observed MW: 17 kDa

亚型: IgG

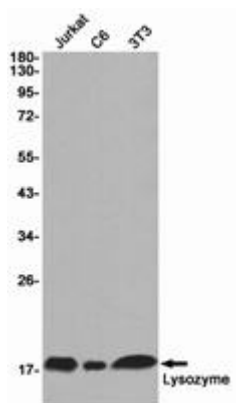
纯化: Affinity Purified

种属反应性: Human, Mouse and Rat

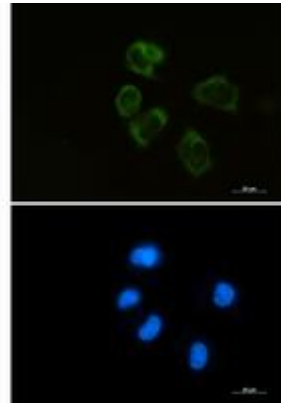
成分: PBS (without Mg²⁺ and Ca²⁺), pH 7.3 containing 50% glycerol, 0.5% BSA and 0.02% sodium azide

研究领域: Cell Biology

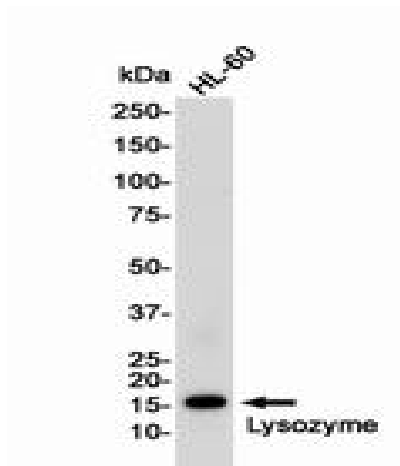
储存和运输: Store at -20°C. Avoid repeated freezing and thawing



Western blot analysis of Lysozyme in Jurkat, C6, 3T3 lysates using Lysozyme antibody



Immunocytochemistry analysis of Lysozyme (green) in HEPG2 using Lysozyme antibody, and DAPI (blue).



Western blot analysis of Lysozyme in HL-60 lysates using Lysozyme antibody.