

LYRM1 RABBIT PAB

货号: S218949

产品全名: LYRM1 兔多抗

基因符号: A211C6.1

UNIPROT ID: O43325 (Gene Accession - BC017039)

背景: The protein encoded by this gene belongs to the mitochondrial leucine/tyrosine/arginine motif family of proteins. Proteins of this family are short polypeptides that contain a leucine/tyrosine/arginine motif near the N-terminus. This gene is widely expressed with high levels in omental adipose tissue of obese individuals. In adipose tissue, the protein is localized to the nucleus where it promotes preadipocyte proliferation and lowers the rate of apoptosis to regulate adipose tissue homeostasis. Overexpression of this gene in adipocytes causes abnormal mitochondrial morphology and mitochondrial dysfunction. Alternative splicing results in multiple transcript variants.

抗原: Fusion protein of human LYRM1

经过测试的应用: ELISA, WB, IHC

推荐稀释比: IHC: 50-300;WB: 500-2000;ELISA: 5000-10000

种属反应性: Rabbit

克隆性: Rabbit Polyclonal

亚型: Immunogen-specific rabbit IgG

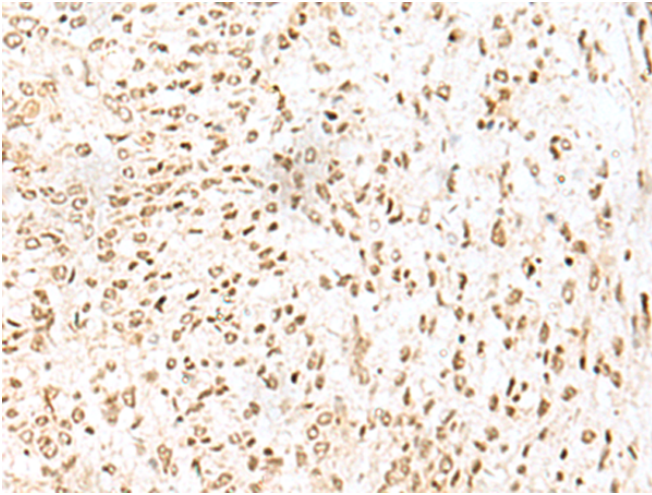
纯化: Antigen affinity purification

种属反应性: Human, Mouse, Rat

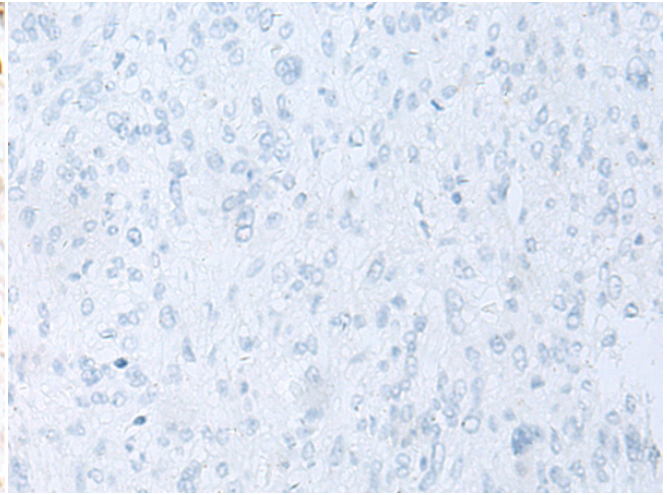
成分: PBS (without Mg²⁺ and Ca²⁺), pH 7.4, 150 mM NaCl, 0.05% Sodium Azide and 40% glycerol

研究领域: Cancer

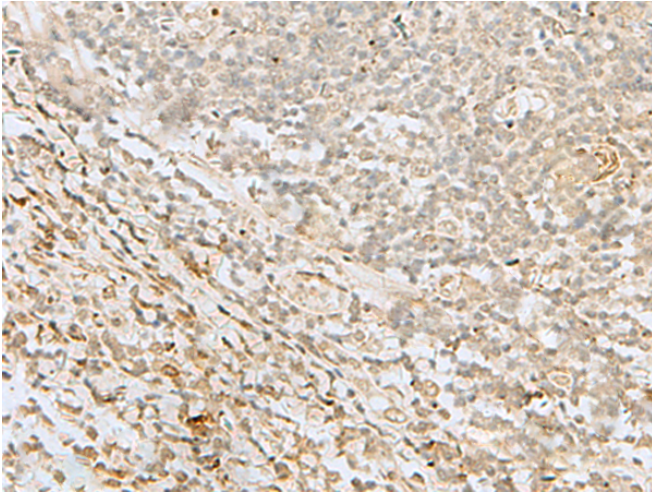
储存和运输: Store at -20°C. Avoid repeated freezing and thawing



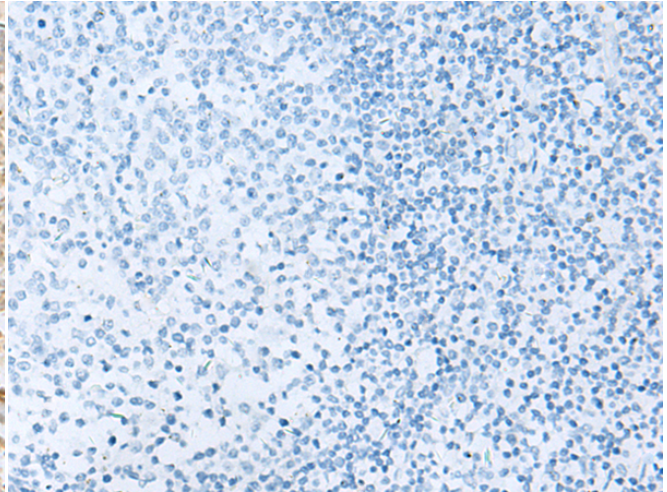
Immunohistochemistry analysis of paraffin embedded Human liver cancer tissue using 218949(LYRM1 Antibody) at a dilution of 1/50(Nucleus).



In comparison with the IHC on the left, the same paraffin-embedded Human liver cancer tissue is first treated with the fusion protein and then with 218949(Anti-LYRM1 Antibody) at dilution 1/50.

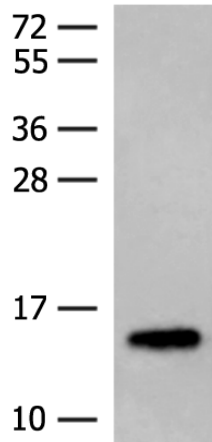


The image on the left is immunohistochemistry of paraffin-embedded Human tonsil tissue using 218949(Anti-LYRM1 Antibody) at a dilution of 1/50.



In comparison with the IHC on the left, the same paraffin-embedded Human tonsil tissue is first treated with fusion protein and then with D225557(Anti-LYRM1 Antibody) at dilution 1/50.

kDa



Gel: 12%SDS-PAGE, Lysate: 40 µg;
Lane: Mouse adipose tissue lysates;
Primary antibody: 218949(LYRM1 Antibody) at dilution 1/300;
Secondary antibody: Goat anti rabbit IgG at 1/8000 dilution;
Exposure time: 5 minutes



Product Description

Pioneering GTPase and Oncogene Product Development since 2010
