

LYRIC RABBIT MAB

货号: N263411

产品全名: LYRIC 兔单克隆抗体

基因符号 MTDH; AEG1; LYRIC; Protein LYRIC; 3D3/LYRIC; Astrocyte elevated gene-1 protein; AEG-1; Lysine-rich CEACAM1 co-isolated protein; Metadherin; Metastasis adhesion 蛋白

UNIPROT ID: Q86UE4

背景: Downregulates SLC1A2/EAAT2 promoter activity when expressed ectopically. Activates the nuclear factor kappa-B (NF-kappa-B) transcription factor. Promotes anchorage-independent growth of immortalized melanocytes and astrocytes which is a key component in tumor cell expansion.

抗原: A synthetic peptide of human LYRIC/AEG1

经过测试的应用: WB,IHC-F,IHC-P,ICC/IF

推荐稀释比: WB: 1/500-1/1000 IHC: 1/50-1/100 IF: 1/50-1/200

种属反应性: Rabbit

克隆性: Rabbit Monoclonal

克隆编号: R02-7D4

分子量: Calculated MW: 64 kDa; Observed MW: 75 kDa

亚型: IgG

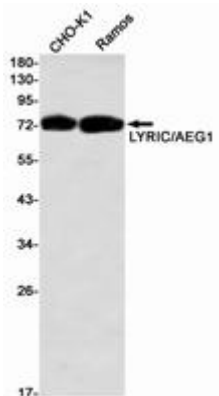
纯化: Affinity Purified

种属反应性: Human, Mouse and Rat,Hamster

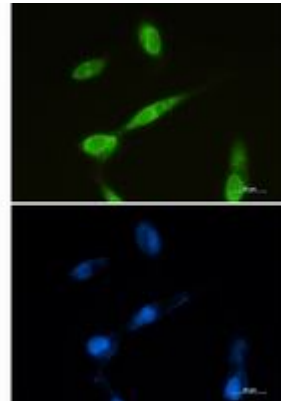
成分: PBS (without Mg²⁺ and Ca²⁺), pH 7.3 containing 50% glycerol, 0.5% BSA and 0.02% sodium azide

研究领域: Signal Transduction

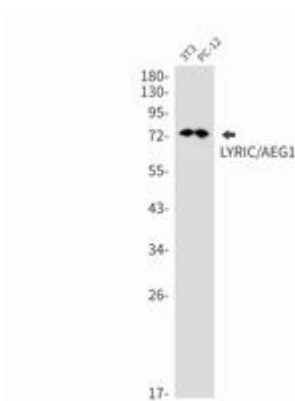
储存和运输: Store at -20°C. Avoid repeated freezing and thawing



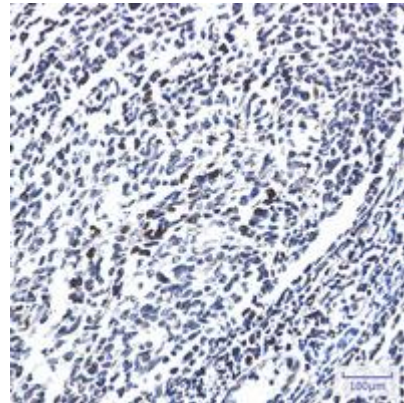
Western blot analysis of LYRIC/AEG1 in CHO-K1, Ramos lysates using LYRIC/AEG1 antibody



Immunocytochemistry analysis of LYRIC (green) in U87-MG using LYRIC antibody, and DAPI (blue).



Western blot analysis of LYRIC/AEG1 in 3T3, PC-12 lysates using LYRIC/AEG1 antibody.



Immunohistochemistry analysis of paraffin-embedded Human tonsil using LYRIC/AEG1 antibody. High-pressure and temperature Sodium Citrate pH 6.0 was used for antigen retrieval.