

## LYRIC (2E4) MOUSE MAB

货号: N261194

产品全名: LYRIC (2E4) 小鼠单抗

基因符号 MTDH; AEG1; LYRIC; Protein LYRIC; 3D3/LYRIC; Astrocyte elevated gene-1 protein; AEG-1; Lysine-rich CEACAM1 co-isolated protein; Metadherin; Metastasis adhesion 蛋白

**UNIPROT ID:** Q86UE4

背景: Downregulates SLC1A2/EAAT2 promoter activity when expressed ectopically. Activates the nuclear factor kappa-B (NF-kappa-B) transcription factor. Promotes anchorage-independent growth of immortalized melanocytes and astrocytes which is a key component in tumor cell expansion.

抗原: Purified recombinant fragment of human Metadherin expressed in E. Coli.

经过测试的应用: WB,IHC-P,FC

推荐稀释比: WB: 1/500-1/1000 IHC: 1/50-1/100 FC: 1/50-1/100

种属反应性: Mouse

克隆性: Mouse Monoclonal

克隆编号: 2E4-D8-D11

分子量: Calculated MW: 64 kDa; Observed MW: 64 kDa

亚型: IgG1

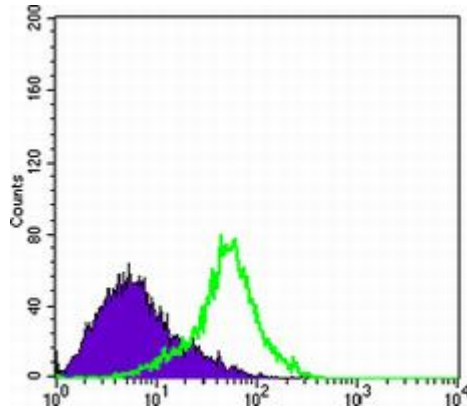
纯化: Ascitic Fluid

种属反应性: Human

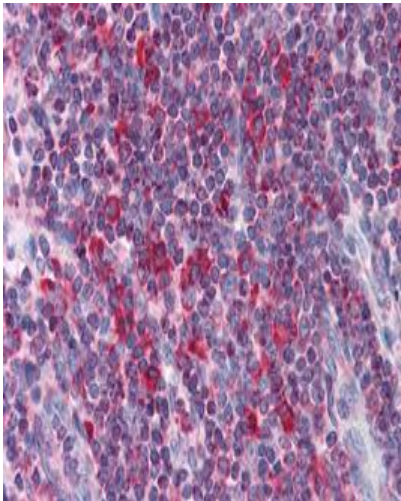
成分: PBS (without Mg<sup>2+</sup> and Ca<sup>2+</sup>), pH 7.3 containing 50% glycerol, 0.5% BSA and 0.02% sodium azide

研究领域: Signal Transduction

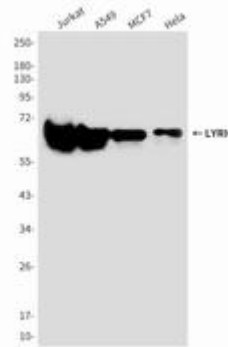
储存和运输: Store at -20°C. Avoid repeated freezing and thawing



Flow cytometry analysis of Hela cells stained with Metadherin antibody (green) and negative control (purple).



Immunohistochemistry analysis of paraffin-embedded Human Liver tissues using Metadherin antibody. High-pressure and temperature Sodium Citrate pH 6.0 was used for antigen retrieval.



Western blot analysis of Lyric/Metadherin in Jurkat, A549, MCF-7 and Hela lysates using Lyric/Metadherin antibody.