

LYPLA2 RABBIT PAB

货号: S218199

产品全名: LYPLA2 兔多抗

基因符号: APT2; APT-2; DJ886K2.4

UNIPROT ID: O95372 (Gene Accession - BC017034)

背景: Lysophospholipases are enzymes that act on biological membranes to regulate the multifunctional lysophospholipids. There are alternatively spliced transcript variants described for this gene but the full length nature is not known yet.

抗原: Full length fusion 蛋白

经过测试的应用: ELISA, IHC

推荐稀释比: IHC: 25-100; ELISA: 5000-10000

种属反应性: Rabbit

克隆性: Rabbit Polyclonal

亚型: Immunogen-specific rabbit IgG

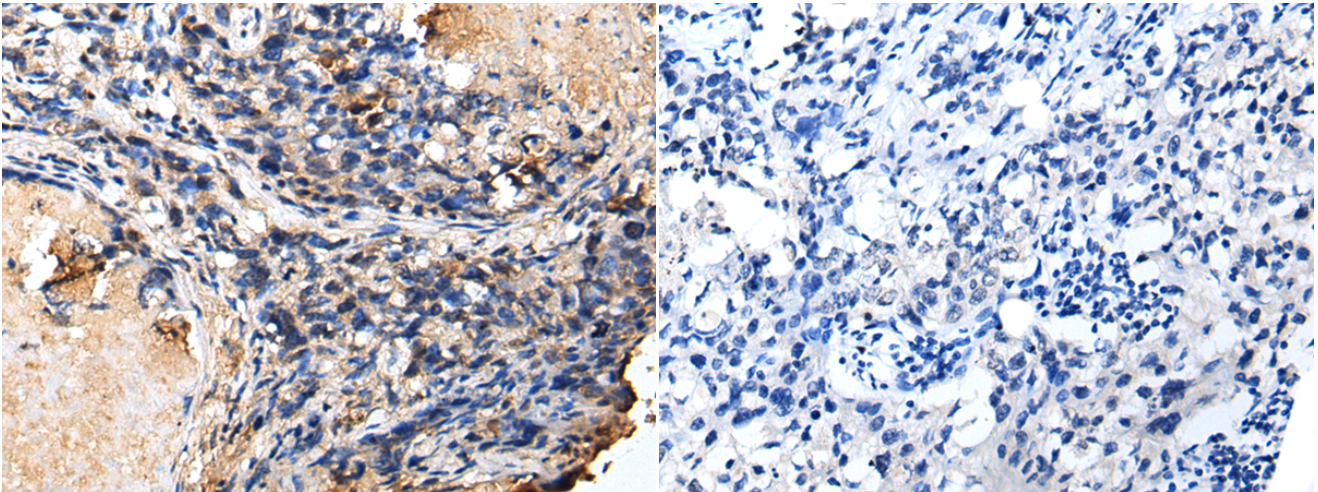
纯化: Antigen affinity purification

种属反应性: Human, Mouse, Rat

成分: PBS (without Mg²⁺ and Ca²⁺), pH 7.4, 150 mM NaCl, 0.05% Sodium Azide and 40% glycerol

研究领域: Metabolism

储存和运输: Store at -20°C. Avoid repeated freezing and thawing



Immunohistochemistry analysis of paraffin embedded Human lung cancer tissue using 218199(LYPLA2 Antibody) at a dilution of 1/25(Cytoplasm).

In comparison with the IHC on the left, the same paraffin-embedded Human lung cancer tissue is first treated with the fusion protein and then with 218199(Anti-LYPLA2 Antibody) at dilution 1/25.