

LYPD4 RABBIT PAB

货号: S218172

产品全名: LYPD4 兔多抗

基因符号: SMR

UNIPROT ID: Q6UWN0 (Gene Accession - BC034629)

背景: Predicted to be located in extracellular region and plasma membrane. Predicted to be active in plasma membrane raft. Predicted to be anchored component of plasma membrane. [provided by Alliance of Genome Resources, Apr 2022]

抗原: Fusion protein of human LYPD4

经过测试的应用: ELISA, IHC

推荐稀释比: IHC: 100-300; ELISA: 5000-10000

种属反应性: Rabbit

克隆性: Rabbit Polyclonal

亚型: Immunogen-specific rabbit IgG

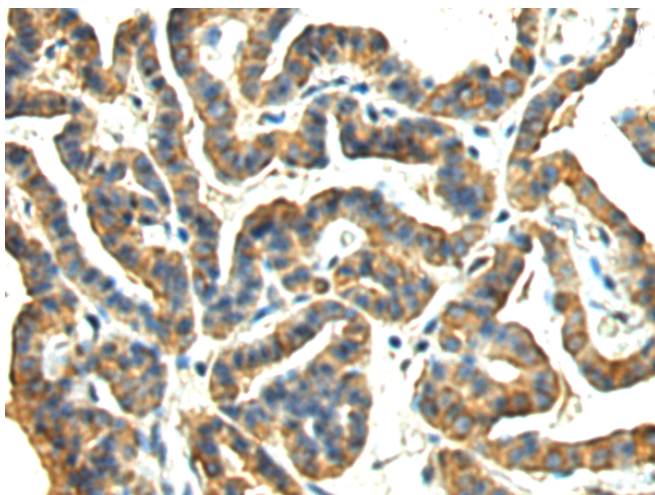
纯化: Antigen affinity purification

种属反应性: Human

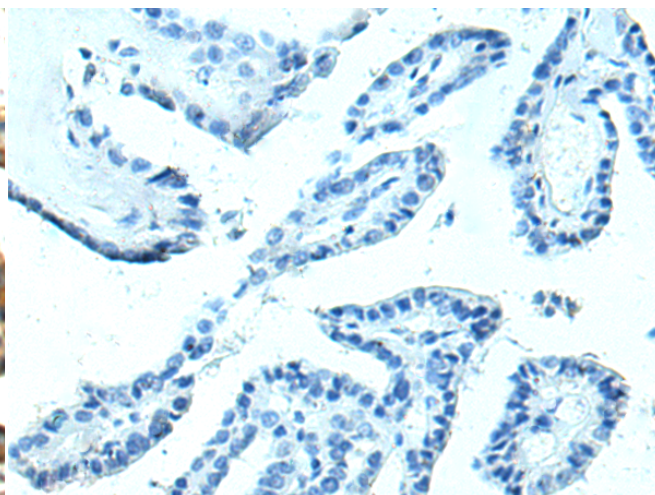
成分: PBS (without Mg²⁺ and Ca²⁺), pH 7.4, 150 mM NaCl, 0.05% Sodium Azide and 40% glycerol

研究领域: Cell Biology

储存和运输: Store at -20°C. Avoid repeated freezing and thawing



Immunohistochemistry analysis of paraffin embedded Human thyroid cancer tissue using 218172(LYPD4 Antibody) at a dilution of 1/110(Cell membrane).



In comparison with the IHC on the left, the same paraffin-embedded Human thyroid cancer tissue is first treated with the fusion protein and then with 218172(Anti-LYPD4 Antibody) at dilution 1/110.