

LY75 RABBIT PAB

货号: S219737

产品全名: LY75 兔多抗

基因符号: CD205; LY-75; CLEC13B; DEC-205; GP200-MR6

UNIPROT ID: O60449 (Gene Accession - NP_002340)

背景: Acts as an endocytic receptor to direct captured antigens from the extracellular space to a specialized antigen-processing compartment (By similarity). Causes reduced proliferation of B-lymphocytes.

抗原: Synthetic peptide of human LY75

经过测试的应用: ELISA, IHC

推荐稀释比: IHC: 25-50; ELISA: 5000-10000

种属反应性: Rabbit

克隆性: Rabbit Polyclonal

亚型: Immunogen-specific rabbit IgG

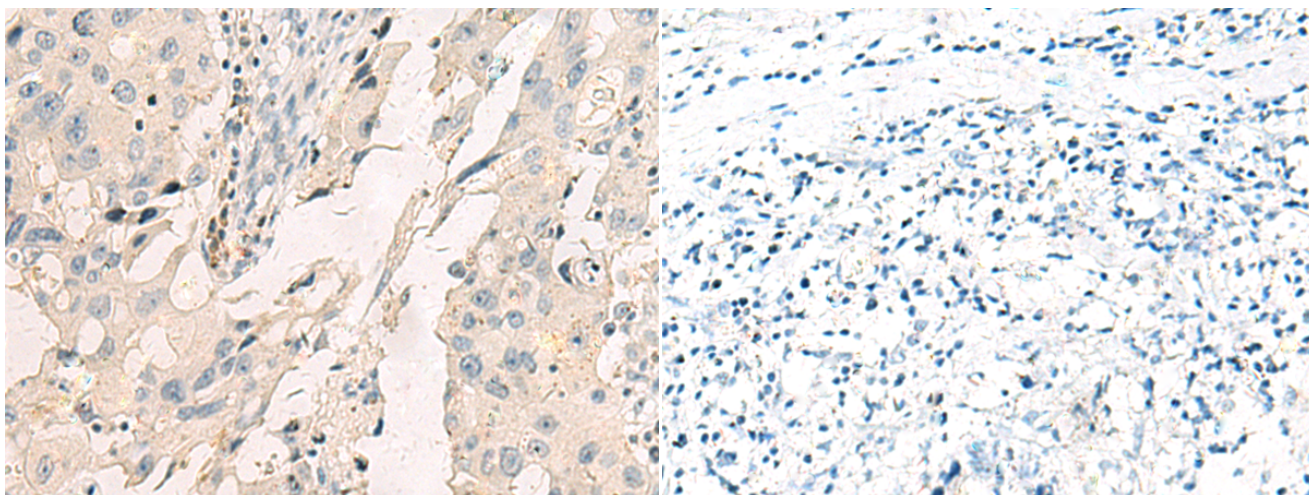
纯化: Antigen affinity purification

种属反应性: Human

成分: PBS (without Mg²⁺ and Ca²⁺), pH 7.4, 150 mM NaCl, 0.05% Sodium Azide and 40% glycerol

研究领域: Immunology

储存和运输: Store at -20°C. Avoid repeated freezing and thawing



Immunohistochemistry analysis of paraffin embedded Human breast cancer tissue using 219737(LY75 Antibody) at a dilution of 1/35(Cytoplasm).

In comparison with the IHC on the left, the same paraffin-embedded Human breast cancer tissue is first treated with the synthetic peptide and then with 219737(Anti-LY75 Antibody) at dilution 1/35.