

LY6A RABBIT PAB

货号: S214013

产品全名: Ly6a 兔多抗

基因符号 TAP; Sca1; Sca-1; Ly-6A.2; Ly-6A/E; Ly-6E.1

UNIPROT ID: P05533 (Gene Accession - NP_034868)

背景: The activity of natural killer (NK) cells is regulated by members of multiple receptor families that recognize class I MHC molecules, such as the killer cell inhibitory receptor/leukocyte immunoglobulin-like receptor (KIR/LIR) family and the C-type lectin superfamily. The Ly-6 alloantigens represent a family of phosphatidylinositol anchored proteins that play a role in the process of T lymphocyte activation. Ly-6 expression is commonly induced on T and B lymphocytes after activation by mitogens. Ly-6A/E is a phosphatidylinositol-linked transmembrane member of the Ly-6 family that is produced in humans after 4 weeks of age. γ -interferon and TNF regulate Ly-6A/E at the level of transcription and mRNA stabilization in certain thymocytes and T-cells.

抗原: Synthetic peptide of mouse Ly6a

经过测试的应用: ELISA, IHC

推荐稀释比: IHC: 20-100; ELISA: 5000-10000

种属反应性: Rabbit

克隆性: Rabbit Polyclonal

亚型: Immunogen-specific rabbit IgG

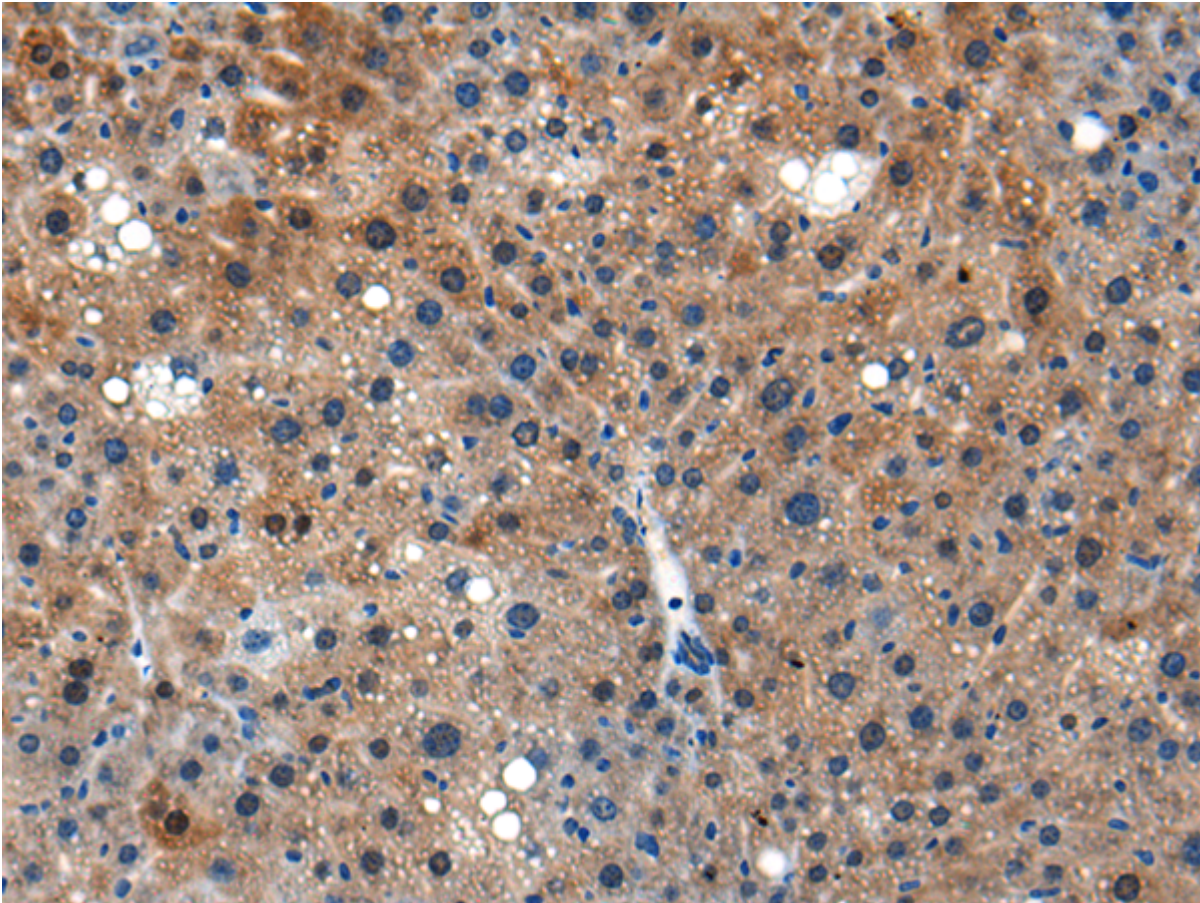
纯化: Antigen affinity purification

种属反应性: Human, Mouse

成分: PBS (without Mg²⁺ and Ca²⁺), pH 7.4, 150 mM NaCl, 0.05% Sodium Azide and 40% glycerol

研究领域: Immunology

储存和运输: Store at -20°C. Avoid repeated freezing and thawing



Immunohistochemistry analysis of paraffin-embedded Mouse liver tissue using 214013(Ly6a Antibody) at a dilution of 1/25(Cell membrane).