

LXR ALPHA RABBIT MAB

货号: N262480

产品全名: LXR alpha 兔单克隆抗体

基因符号 NR1H3; LXRA; Oxysterols receptor LXR-alpha; Liver X receptor alpha; Nuclear receptor subfamily 1 group H member 3

UNIPROT ID: Q13133

背景: Orphan receptor. Interaction with RXR shifts RXR from its role as a silent DNA-binding partner to an active ligand-binding subunit in mediating retinoid responses through target genes defined by LXRES. LXRES are DR4-type response elements characterized by direct repeats of two similar hexanuclotide half-sites spaced by four nucleotides. Plays an important role in the regulation of cholesterol homeostasis, regulating cholesterol uptake through MYLIP-dependent ubiquitination of LDLR, VLDLR and LRP8.

抗原: A synthetic peptide of human LXR alpha

经过测试的应用: WB,IHC-P

推荐稀释比: WB: 1/500-1/1000 IHC: 1/50-1/100

种属反应性: Rabbit

克隆性: Rabbit Monoclonal

克隆编号: R07-6A4

分子量: Calculated MW: 50 kDa; Observed MW: 50 kDa

亚型: IgG

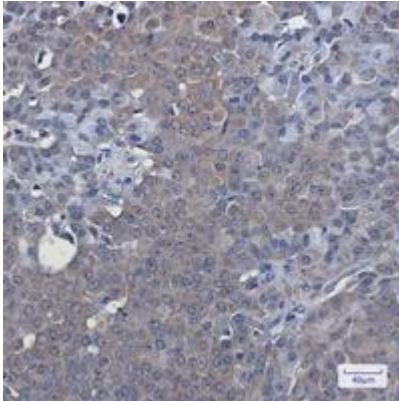
纯化: Affinity Purified

种属反应性: Human,Rat

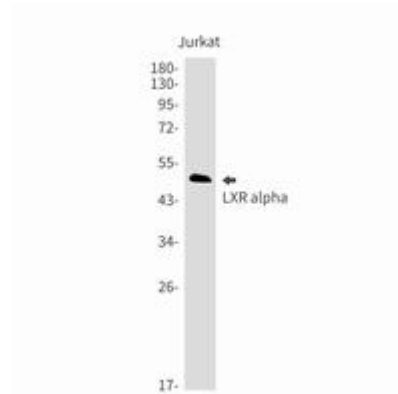
成分: PBS (without Mg²⁺ and Ca²⁺), pH 7.3 containing 50% glycerol, 0.5% BSA and 0.02% sodium azide

研究领域: Cardiovascular

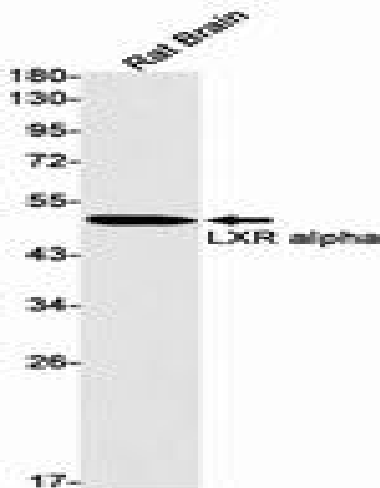
储存和运输: Store at -20°C. Avoid repeated freezing and thawing



Immunohistochemistry analysis of paraffin-embedded Human breast cancer using LXR alpha antibody. High-pressure and temperature Sodium Citrate pH 6.0 was used for antigen retrieval.



Western blot analysis of LXR alpha in Jurkat lysates using LXR alpha antibody.



Western blot analysis of LXR alpha in rat Brain lysates using LXR alpha antibody.