

LXN RABBIT PAB

货号: N225058

产品全名: LXN 兔多抗

基因符号 LXN; Latexin; Endogenous carboxypeptidase inhibitor; ECI; Protein MUM; Tissue carboxypeptidase inhibitor; TCI

UNIPROT ID: Q9BS40

背景: Hardly reversible, non-competitive, and potent inhibitor of CPA1, CPA2 and CPA4.

抗原: Synthesized peptide derived from Latexin . at AA range: 90-170

经过测试的应用: WB,IHC-P,ELISA

推荐稀释比: WB: 1/500-1/1000 IHC: 1/50-1/100 ELISA: 1/10000

种属反应性: Rabbit

克隆性: Rabbit Polyclonal

分子量: Calculated MW: 26 kDa; Observed MW: 26 kDa

亚型: IgG

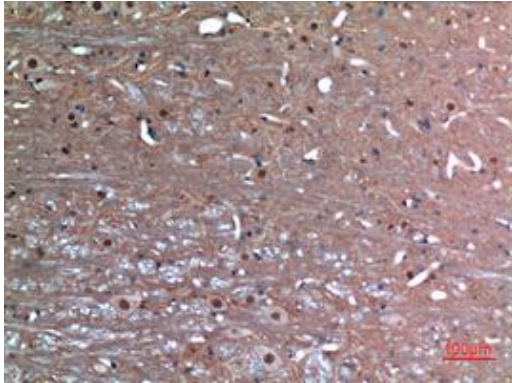
纯化: Affinity Purified

种属反应性: Human, Mouse and Rat

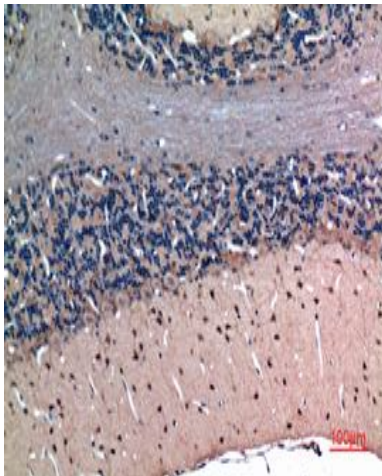
成分: PBS (without Mg²⁺ and Ca²⁺), pH 7.3 containing 50% glycerol, 0.5% BSA and 0.02% sodium azide

研究领域: Immunology

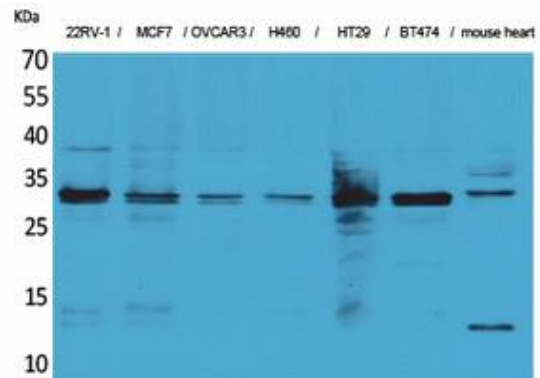
储存和运输: Store at -20°C. Avoid repeated freezing and thawing



Immunohistochemistry analysis of paraffin-embedded rat brain using LXN antibody. High-pressure and temperature Sodium Citrate pH 6.0 was used for antigen retrieval.



Immunohistochemistry analysis of paraffin-embedded rat brain using LXN antibody. High-pressure and temperature Sodium Citrate pH 6.0 was used for antigen retrieval.



Western blot analysis of LXN in 22RV MCF-7, OVCAR3, H460, HT-29, BT474, mouse heart lysates using LXN antibody.