

## LXN RABBIT PAB

货号: S216623

产品全名: LXN 兔多抗

基因符号: ECI; TCI

**UNIPROT ID:** Q9BS40 (Gene Accession - BC005346)

**背景:** Latexin, also designated endogenous carboxypeptidase inhibitor (ECI) or tissue carboxypeptidase inhibitor (TCI), belongs to the protease inhibitor I47 family of proteins. Latexin acts as a non-competitive, reversible inhibitor for metallo-carboxypeptidases (MCPs), including CPA1, CPA2 and CPA4. It is a cytoplasmic protein that is highly expressed in heart, prostate, pancreas, ovary, kidney, brain and colon. Latexin consists of two topologically equivalent subdomains that bind to MCPs with low specificity, which gives it with the flexibility to inhibit all vertebrate A/B MCPs.

**抗原:** Fusion protein of human LXN

**经过测试的应用:** ELISA, WB, IHC

**推荐稀释比:** IHC: 25-100;WB: 1000-5000;ELISA: 2000-10000

**种属反应性:** Rabbit

**克隆性:** Rabbit Polyclonal

**亚型:** Immunogen-specific rabbit IgG

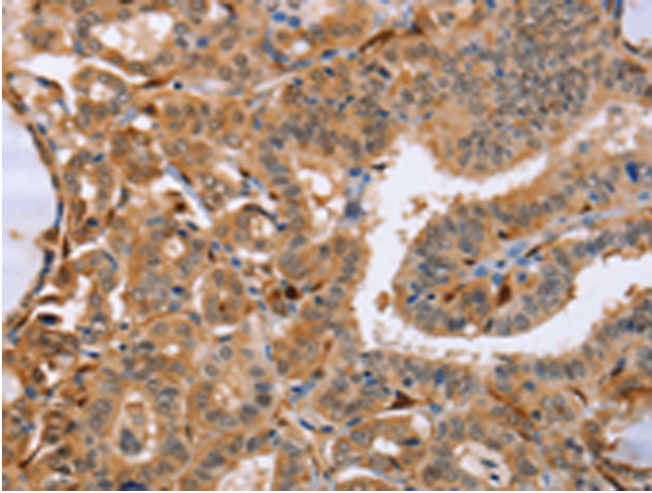
**纯化:** Antigen affinity purification

**种属反应性:** Human, Mouse, Rat

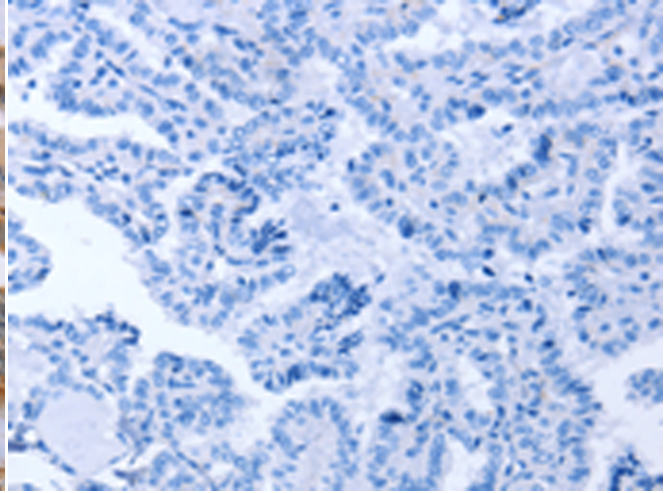
**成分:** PBS (without Mg<sup>2+</sup> and Ca<sup>2+</sup>), pH 7.4, 150 mM NaCl, 0.05% Sodium Azide and 40% glycerol

**研究领域:** Cell Biology, Immunology, Stem Cells, Neuroscience

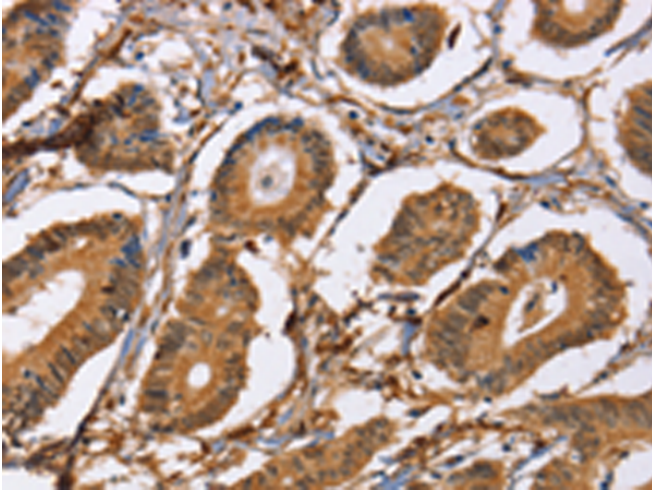
**储存和运输:** Store at -20°C. Avoid repeated freezing and thawing



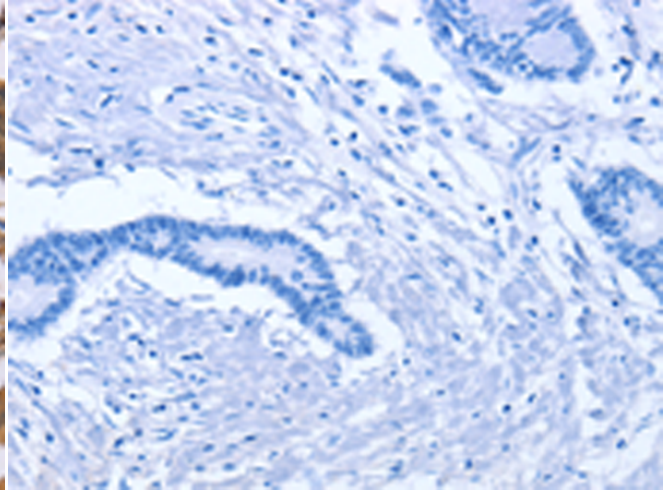
Immunohistochemistry analysis of paraffin embedded Human thyroid cancer tissue using 216623(LXN Antibody) at a dilution of 1/25(Cytoplasm and Nucleus ).



In comparison with the IHC on the left, the same paraffin-embedded Human thyroid cancer tissue is first treated with the fusion protein and then with 216623(Anti-LXN Antibody) at dilution 1/25.



The image on the left is immunohistochemistry of paraffin-embedded Human colon cancer tissue using 216623(Anti-LXN Antibody) at a dilution of 1/25.



In comparison with the IHC on the left, the same paraffin-embedded Human colon cancer tissue is first treated with fusion protein and then with D220935(Anti-LXN Antibody) at dilution 1/25.



Gel: 10%SDS-PAGE, Lysate: 40 µg;  
Lane: A549 cells;  
Primary antibody: 216623(LXN Antibody) at dilution 1/667;  
Secondary antibody: Goat anti rabbit IgG at 1/8000 dilution;  
Exposure time: 10 seconds



# Product Description

Pioneering GTPase and Oncogene Product Development since 2010

---