

## LUMICAN RABBIT MAB

货号: N262479

产品全名: Lumican 兔单克隆抗体

基因符号 LDC; LUM; Lumican; SLRR2D

**UNIPROT ID:** P51884

背景: Belongs to the small leucine-rich proteoglycan (SLRP) family. SLRP class II subfamily. Contains 11 LRR (leucine-rich) repeats. Contains 1 LRRNT domain.

抗原: A synthetic peptide of human Lumican

经过测试的应用: WB,IHC-F,IHC-P,ICC/IF

推荐稀释比: WB: 1/500-1/1000 IHC: 1/50-1/100 IF: 1/50-1/200

种属反应性: Rabbit

克隆性: Rabbit Monoclonal

克隆编号: R02-7F6

分子量: Calculated MW: 38 kDa; Observed MW: 60 kDa

亚型: IgG

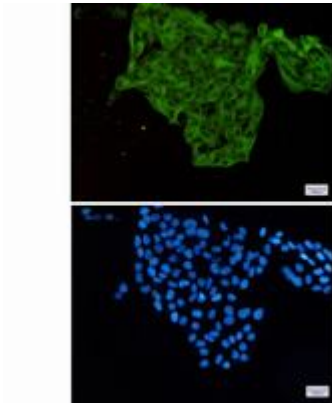
纯化: Affinity Purified

种属反应性: Human, Mouse and Rat

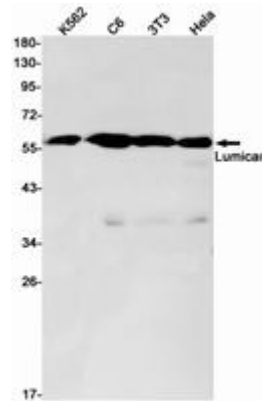
成分: PBS (without Mg<sup>2+</sup> and Ca<sup>2+</sup>), pH 7.3 containing 50% glycerol, 0.5% BSA and 0.02% sodium azide

研究领域: Cancer

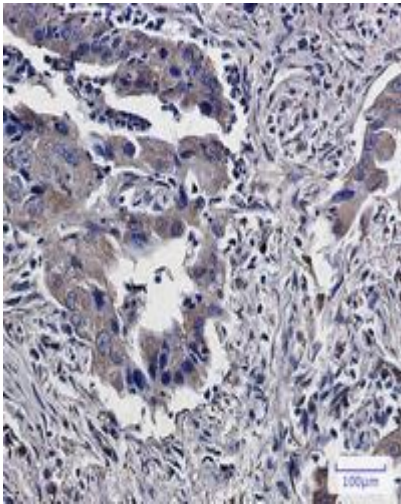
储存和运输: Store at -20°C. Avoid repeated freezing and thawing



Immunocytochemistry analysis of Lumican (green) in Hela using Lumican antibody, and DAPI (blue)



Western blot analysis of Lumican in K562, C6, 3T3, Hela lysates using Lumican antibody.



Immunohistochemistry analysis of paraffin-embedded Human lung cancer using Lumican antibody. High-pressure and temperature Sodium Citrate pH 6.0 was used for antigen retrieval.