

LTO1 RABBIT PAB

货号: S221832

产品全名: LTO1 兔多抗

基因符号: CIAB1; TAOS1; ORAOV1

UNIPROT ID: Q8WV07 (Gene Accession - NP_703152)

背景: The complex LTO1:YAE1 functions as a target specific adapter that probably recruits apo-ABCE1 to the cytosolic iron-sulfur protein assembly (CIA) complex machinery (PubMed:26182403). May be required for biogenesis of the large ribosomal subunit and initiation of translation (PubMed:23318452). May play a role in the regulation of proline metabolism and ROS production (PubMed:24930674).

抗原: Synthetic peptide of human LTO1

经过测试的应用: ELISA, IHC

推荐稀释比: IHC: 20-100; ELISA: 5000-10000

种属反应性: Rabbit

克隆性: Rabbit Polyclonal

亚型: Immunogen-specific rabbit IgG

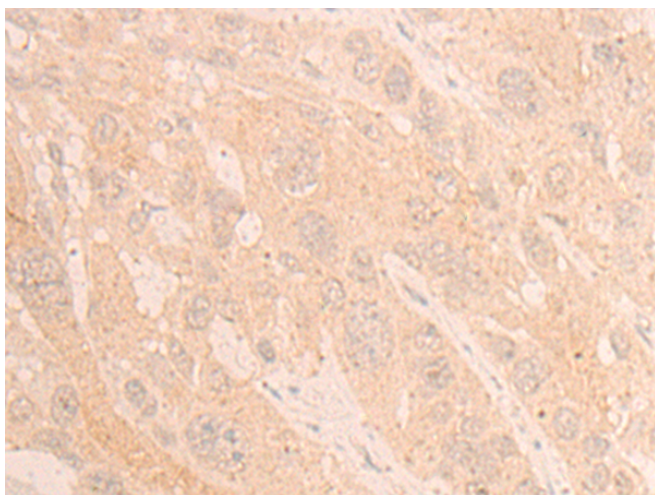
纯化: Antigen affinity purification

种属反应性: Human

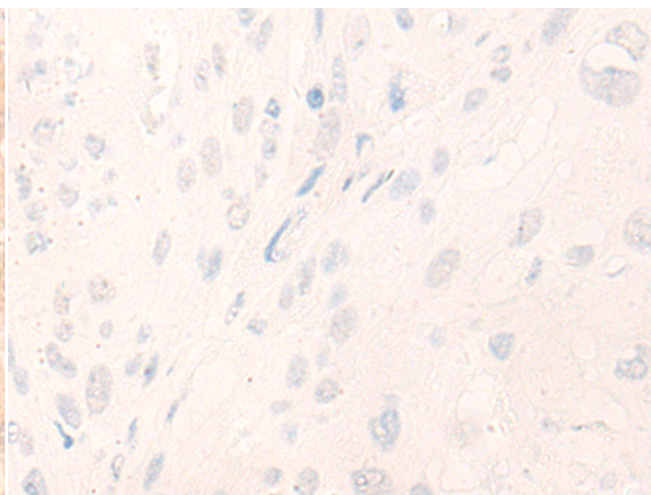
成分: PBS (without Mg²⁺ and Ca²⁺), pH 7.4, 150 mM NaCl, 0.05% Sodium Azide and 40% glycerol

研究领域: Cancer

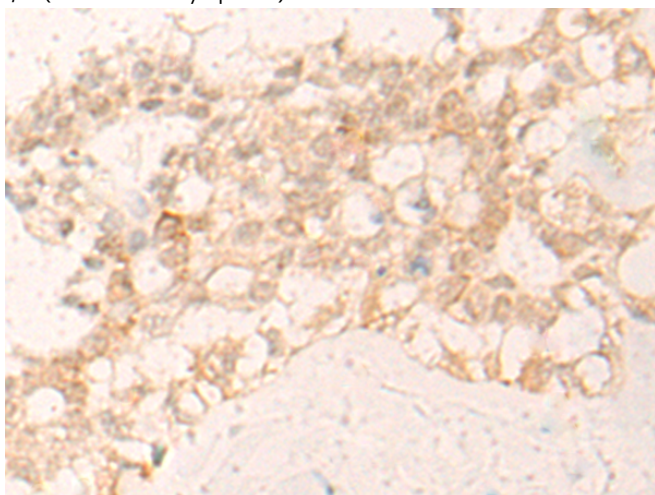
储存和运输: Store at -20°C. Avoid repeated freezing and thawing



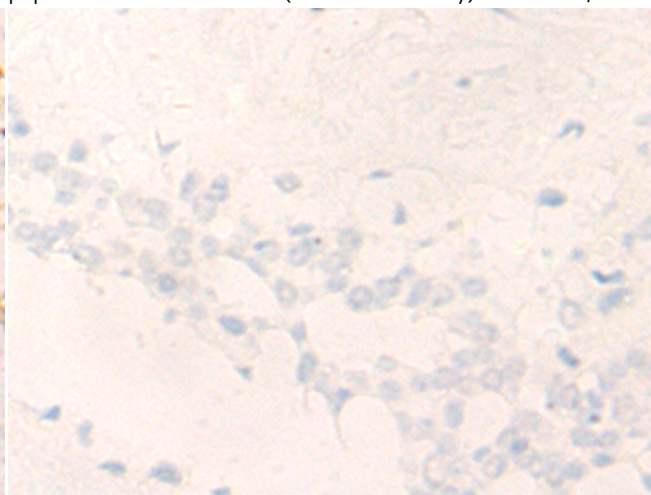
Immunohistochemistry analysis of paraffin embedded Human esophagus cancer tissue using 221832(LTO1 Antibody) at a dilution of 1/20(Nucleus and Cytoplasm).



In comparison with the IHC on the left, the same paraffin-embedded Human esophagus cancer tissue is first treated with the synthetic peptide and then with 221832(Anti-LTO1 Antibody) at dilution 1/20.



The image on the left is immunohistochemistry of paraffin-embedded Human breast cancer tissue using 221832(Anti-LTO1 Antibody) at a dilution of 1/20.



In comparison with the IHC on the left, the same paraffin-embedded Human breast cancer tissue is first treated with synthetic peptide and then with D263594(Anti-LTO1 Antibody) at dilution 1/20.



Product Description

Pioneering GTPase and Oncogene Product Development since 2010
