

LTF RABBIT PAB

货号: S217114

产品全名: LTF 兔多抗

基因符号 LF; HLF2; GIG12; HELI10

UNIPROT ID: P02788 (Gene Accession - BC015822)

背景: This gene is a member of the transferrin family of genes and its protein product is found in the secondary granules of neutrophils. The protein is a major iron-binding protein in milk and body secretions with an antimicrobial activity, making it an important component of the non-specific immune system. The protein demonstrates a broad spectrum of properties, including regulation of iron homeostasis, host defense against a broad range of microbial infections, anti-inflammatory activity, regulation of cellular growth and differentiation and protection against cancer development and metastasis. Antimicrobial, antiviral, antifungal and antiparasitic activity has been found for this protein and its peptides. Alternatively spliced transcript variants encoding different isoforms have been found for this gene.

抗原: Fusion protein of human LTF

经过测试的应用: ELISA, WB, IHC

推荐稀释比: IHC: 100-300;WB: 500-2000;ELISA: 5000-10000

种属反应性: Rabbit

克隆性: Rabbit Polyclonal

亚型: Immunogen-specific rabbit IgG

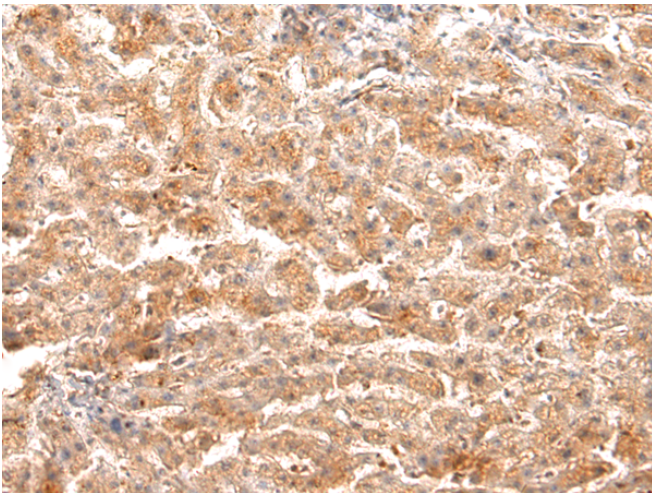
纯化: Antigen affinity purification

种属反应性: Human

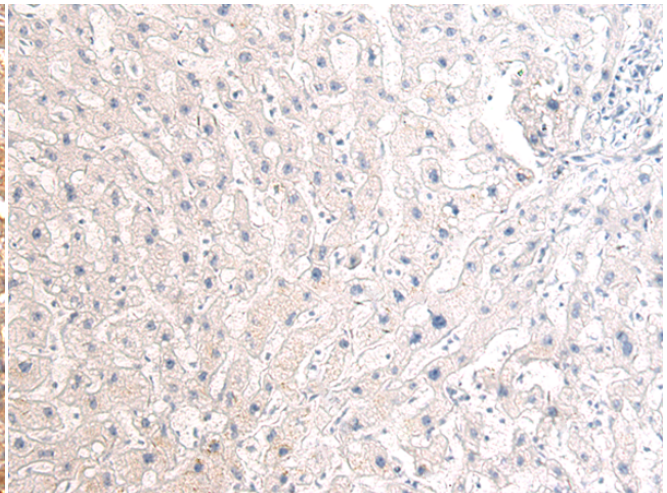
成分: PBS (without Mg²⁺ and Ca²⁺), pH 7.4, 150 mM NaCl, 0.05% Sodium Azide and 40% glycerol

研究领域: Cancer, Cardiovascular

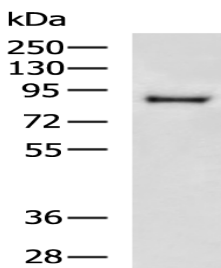
储存和运输: Store at -20°C. Avoid repeated freezing and thawing



Immunohistochemistry analysis of paraffin embedded Human liver cancer tissue using 217114(LTF Antibody) at a dilution of 1/100(Cytoplasm).



In comparison with the IHC on the left, the same paraffin-embedded Human liver cancer tissue is first treated with the fusion protein and then with 217114(Anti-LTF Antibody) at dilution 1/100.



Gel: 8%SDS-PAGE, Lysate: 40 µg;

Lane: Human placenta tissue lysate;

Primary antibody: 217114(LTF Antibody) at dilution 1/800;

Secondary antibody: HRP-conjugated Goat anti rabbit IgG at 1/5000 dilution;

Exposure time: 2 minutes



Product Description

Pioneering GTPase and Oncogene Product Development since 2010
