

## LRRC45 RABBIT PAB

货号: S218201

产品全名: LRRC45 兔多抗

基因符号

**UNIPROT ID:** Q96CN5 (Gene Accession - BC014109 )

背景: Component of the proteinaceous fiber-like linker between two centrioles, required for centrosome cohesion.

抗原: Fusion protein of human LRRC45

经过测试的应用: ELISA, WB, IHC

推荐稀释比: IHC: 100-300;WB: 500-2000;ELISA: 5000-10000

种属反应性: Rabbit

克隆性: Rabbit Polyclonal

亚型: Immunogen-specific rabbit IgG

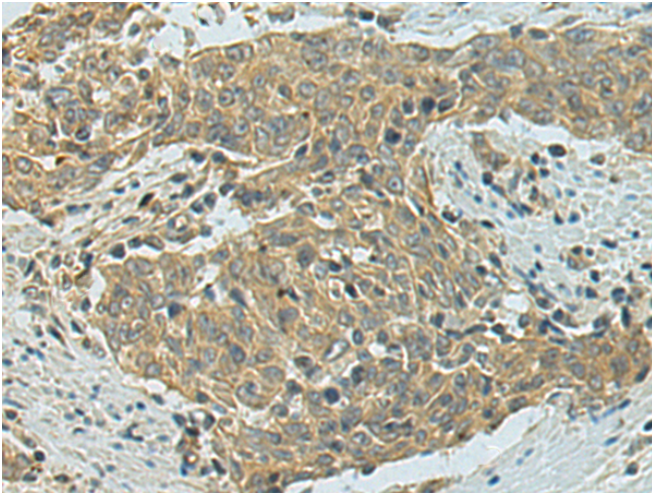
纯化: Antigen affinity purification

种属反应性: Human, Mouse

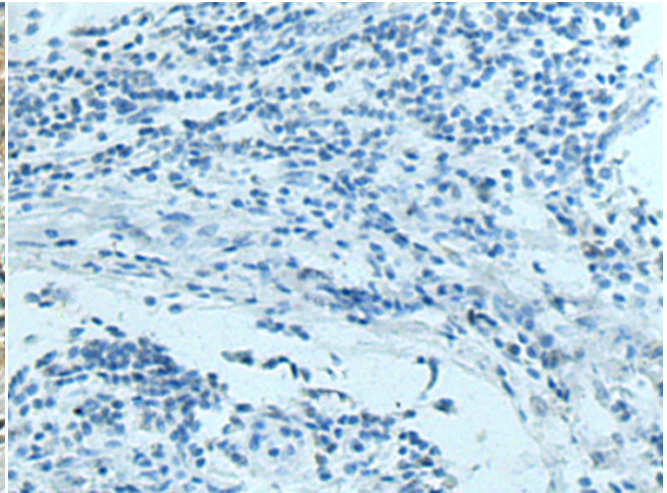
成分: PBS (without Mg<sup>2+</sup> and Ca<sup>2+</sup>), pH 7.4, 150 mM NaCl, 0.05% Sodium Azide and 40% glycerol

研究领域: Cell Biology

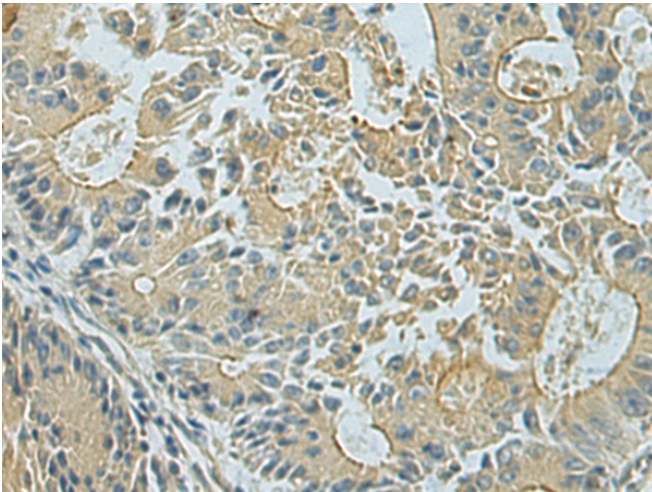
储存和运输: Store at -20°C. Avoid repeated freezing and thawing



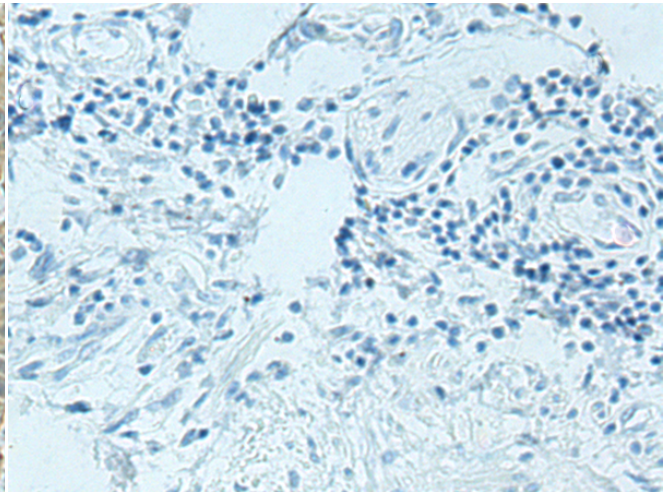
Immunohistochemistry analysis of paraffin embedded Human esophagus cancer tissue using 218201(LRRC45 Antibody) at a dilution of 1/130(Cytoplasm).



In comparison with the IHC on the left, the same paraffin-embedded Human esophagus cancer tissue is first treated with the fusion protein and then with 218201(Anti-LRRC45 Antibody) at dilution 1/130.

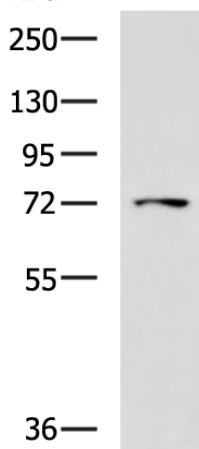


The image on the left is immunohistochemistry of paraffin-embedded Human colorectal cancer tissue using 218201(Anti-LRRC45 Antibody) at a dilution of 1/130.



In comparison with the IHC on the left, the same paraffin-embedded Human colorectal cancer tissue is first treated with fusion protein and then with D223931(Anti-LRRC45 Antibody) at dilution 1/130.

kDa



Gel: 8%SDS-PAGE, Lysate: 40 µg;  
Lane: HepG2 cell lysate;  
Primary antibody: 218201(LRRC45 Antibody) at dilution 1/1000;  
Secondary antibody: HRP-conjugated Goat anti rabbit IgG at 1/5000 dilution;  
Exposure time: 2 minutes



# Product Description

Pioneering GTPase and Oncogene Product Development since 2010

---