

## LRRC4 RABBIT PAB

货号: S221457

产品全名: LRRC4 兔多抗

基因符号: NAG14; NGL-2

**UNIPROT ID:** Q9HBW1 (Gene Accession - NP\_071426 )

**背景:** This gene is significantly downregulated in primary brain tumors. Synaptic adhesion protein. Regulates the formation of excitatory synapses through the recruitment of pre-and-postsynaptic proteins. Organize the lamina/pathway-specific differentiation of dendrites. Plays a important role for auditory synaptic responses. Involved in the suppression of glioma (By similarity).

**抗原:** Synthetic peptide of human LRRC4

**经过测试的应用:** ELISA, IHC

**推荐稀释比:** IHC: 25-50; ELISA: 5000-10000

**种属反应性:** Rabbit

**克隆性:** Rabbit Polyclonal

**亚型:** Immunogen-specific rabbit IgG

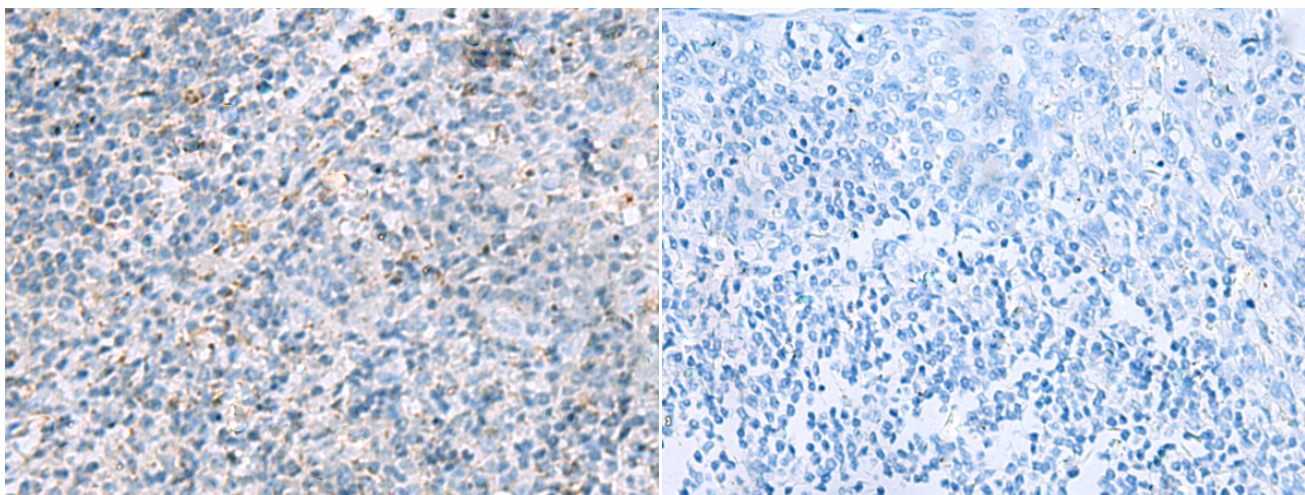
**纯化:** Antigen affinity purification

**种属反应性:** Human, Mouse, Rat

**成分:** PBS (without Mg<sup>2+</sup> and Ca<sup>2+</sup>), pH 7.4, 150 mM NaCl, 0.05% Sodium Azide and 40% glycerol

**研究领域:** Neuroscience

**储存和运输:** Store at -20°C. Avoid repeated freezing and thawing



Immunohistochemistry analysis of paraffin embedded Human tonsil tissue using 221457(LRRC4 Antibody) at a dilution of 1/40(Cell membrane).

In comparison with the IHC on the left, the same paraffin-embedded Human tonsil tissue is first treated with the synthetic peptide and then with 221457(Anti-LRRC4 Antibody) at dilution 1/40.