

## LRRC23 RABBIT PAB

货号: S221460

产品全名: LRRC23 兔多抗

基因符号: LRPB7

**UNIPROT ID:** Q53EV4 (Gene Accession - NP\_964013)

**背景:** The leucine-rich (LRR) repeat is a 20-30 amino acid motif that forms a hydrophobic  $\alpha$ / $\beta$  horseshoe fold, allowing it to accommodate several leucine residues within a tightly packed core. All LRR repeats contain a variable segment and a highly conserved segment, the latter of which accounts for 11 or 12 residues of the entire LRR motif. The primary function of these motifs is to provide a versatile structural framework to mediate the formation of protein-protein interactions. LRRs are present in a variety of proteins with diverse structure and function, including innate immunity and nervous system development. Several human diseases are associated with mutations in genes encoding LRR-containing proteins. LRRC23 (leucine-rich repeat-containing protein 23), also known as leucine-rich protein B7, is a 343 amino acid protein that contains eight LRR (leucine-rich) repeats and one LRRC domain. LRRC23 exists as two alternatively spliced isoforms and is encoded by a gene mapping to chromosome 12.

**抗原:** Synthetic peptide of human LRRC23

**经过测试的应用:** ELISA, IHC

**推荐稀释比:** IHC: 25-100; ELISA: 5000-10000

**种属反应性:** Rabbit

**克隆性:** Rabbit Polyclonal

**亚型:** Immunogen-specific rabbit IgG

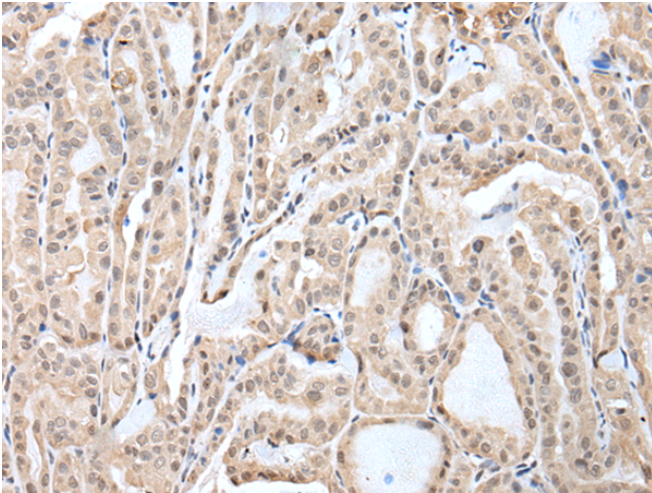
**纯化:** Antigen affinity purification

**种属反应性:** Human

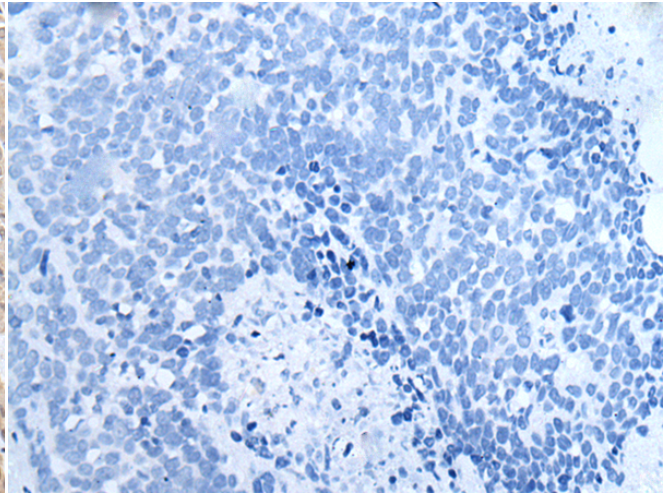
**成分:** PBS (without Mg<sup>2+</sup> and Ca<sup>2+</sup>), pH 7.4, 150 mM NaCl, 0.05% Sodium Azide and 40% glycerol

**研究领域:** Cell Biology

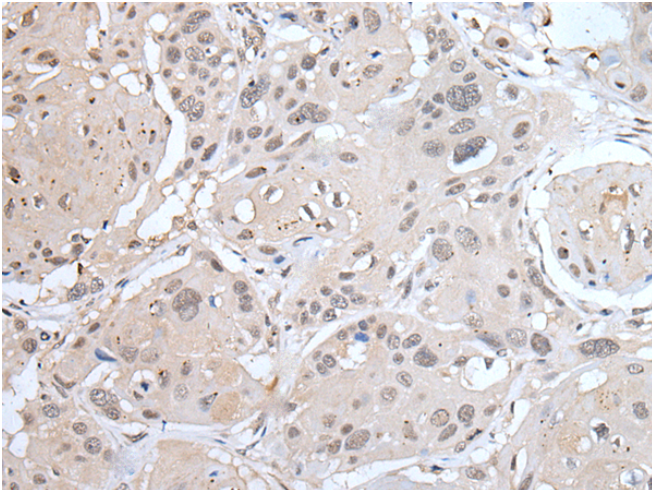
**储存和运输:** Store at -20°C. Avoid repeated freezing and thawing



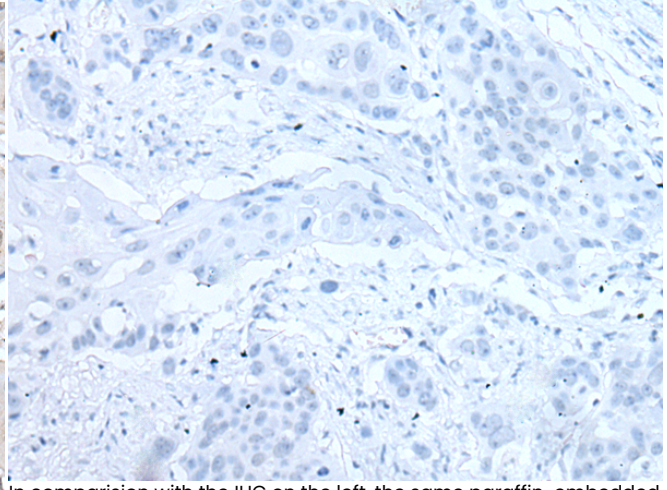
Immunohistochemistry analysis of paraffin embedded Human thyroid cancer tissue using 221460(LRRC23 Antibody) at a dilution of 1/30(Cell membrane and Nucleus).



In comparison with the IHC on the left, the same paraffin-embedded Human thyroid cancer tissue is first treated with the synthetic peptide and then with 221460(Anti-LRRC23 Antibody) at dilution 1/30.



The image on the left is immunohistochemistry of paraffin-embedded Human esophagus cancer tissue using 221460(Anti-LRRC23 Antibody) at a dilution of 1/30.



In comparison with the IHC on the left, the same paraffin-embedded Human esophagus cancer tissue is first treated with synthetic peptide and then with D263061(Anti-LRRC23 Antibody) at dilution 1/30.