

LRRC2 RABBIT PAB

货号: S218203

产品全名: LRRC2 兔多抗

基因符号

UNIPROT ID: Q9BYS8 (Gene Accession - BC029118)

背景: This gene encodes a member of the leucine-rich repeat-containing family of proteins, which function in diverse biological pathways. This family member may possibly be a nuclear protein. Similarity to the RAS suppressor protein, as well as expression down-regulation observed in tumor cells, suggests that it may function as a tumor suppressor. The gene is located in the chromosome 3 common eliminated region 1 (C3CER1), a 1.4 Mb region that is commonly deleted in diverse tumors. A related pseudogene has been identified on chromosome 2.

抗原: Fusion protein of human LRRC2

经过测试的应用: ELISA, IHC

推荐稀释比: IHC: 50-200; ELISA: 5000-10000

种属反应性: Rabbit

克隆性: Rabbit Polyclonal

亚型: Immunogen-specific rabbit IgG

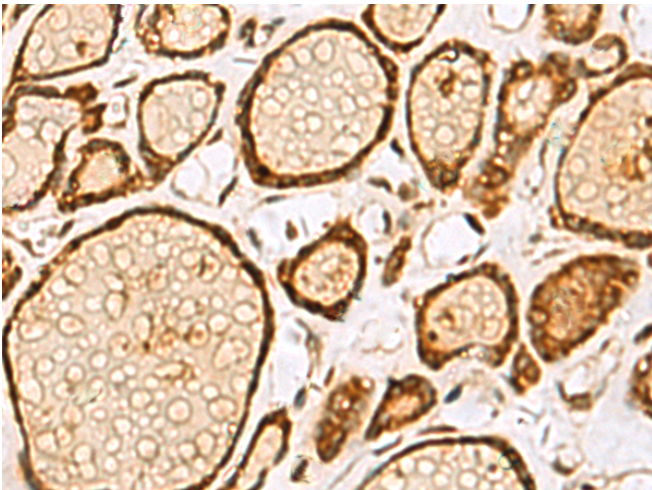
纯化: Antigen affinity purification

种属反应性: Human, Mouse

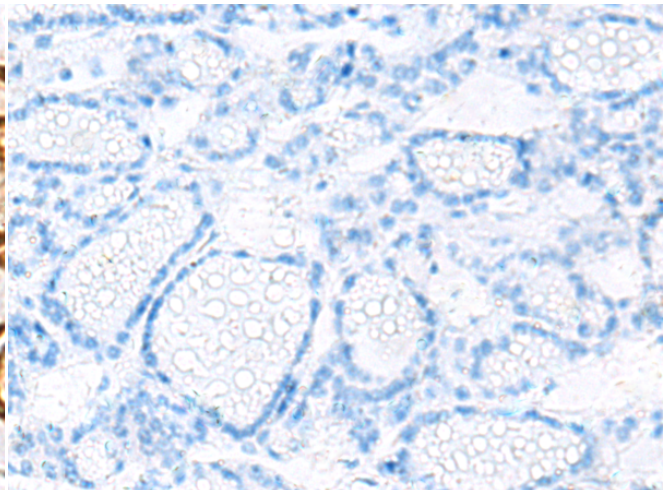
成分: PBS (without Mg²⁺ and Ca²⁺), pH 7.4, 150 mM NaCl, 0.05% Sodium Azide and 40% glycerol

研究领域: Epigenetics and Nuclear Signaling, Cell Biology

储存和运输: Store at -20°C. Avoid repeated freezing and thawing



Immunohistochemistry analysis of paraffin embedded Human thyroid cancer tissue using 218203(LRRC2 Antibody) at a dilution of 1/55(Nucleus and Cytoplasm).



In comparison with the IHC on the left, the same paraffin-embedded Human thyroid cancer tissue is first treated with the fusion protein and then with 218203(Anti-LRRC2 Antibody) at dilution 1/55.