

## LRP1B RABBIT PAB

货号: S221527

产品全名: LRP1B 兔多抗

基因符号: LRPDIT; LRP-DIT

**UNIPROT ID:** Q9NZR2 (Gene Accession - NP\_061027)

**背景:** LRP1B belongs to the low density lipoprotein (LDL) receptor gene family. These receptors play a wide variety of roles in normal cell function and development due to their interactions with multiple ligands (Liu et al., 2001 [PubMed 11384978]).

**抗原:** Synthetic peptide of human LRP1B

**经过测试的应用:** ELISA, IHC

**推荐稀释比:** IHC: 40-200; ELISA: 5000-10000

**种属反应性:** Rabbit

**克隆性:** Rabbit Polyclonal

**亚型:** Immunogen-specific rabbit IgG

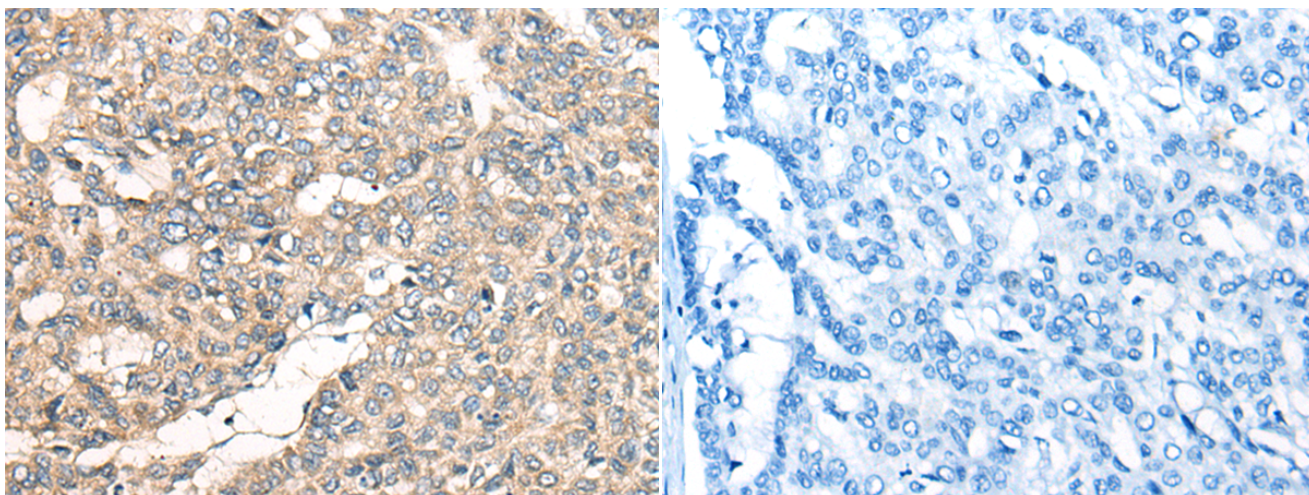
**纯化:** Antigen affinity purification

**种属反应性:** Human, Mouse

**成分:** PBS (without Mg<sup>2+</sup> and Ca<sup>2+</sup>), pH 7.4, 150 mM NaCl, 0.05% Sodium Azide and 40% glycerol

**研究领域:** Immunology

**储存和运输:** Store at -20°C. Avoid repeated freezing and thawing



Immunohistochemistry analysis of paraffin embedded Human liver cancer tissue using 221527(LRP1B Antibody) at a dilution of 1/50(Cytoplasm and Cell membrane).

In comparison with the IHC on the left, the same paraffin-embedded Human liver cancer tissue is first treated with the synthetic peptide and then with 221527(Anti-LRP1B Antibody) at dilution 1/50.