

LRP1 RABBIT MAB

货号: N261644

产品全名: LRP1 兔单克隆抗体

基因符号 A2MR; alpha 2MR; Alpha 2 macroglobulin receptor; CD91; APR; LRP1; LRP85; TGFBR5

UNIPROT ID: Q07954

背景: Endocytic receptor involved in endocytosis and in phagocytosis of apoptotic cells. Required for early embryonic development. Involved in cellular lipid homeostasis. Involved in the plasma clearance of chylomicron remnants and activated LRPAP1 (alpha 2-macroglobulin), as well as the local metabolism of complexes between plasminogen activators and their endogenous inhibitors. May modulate cellular events, such as APP metabolism, kinase-dependent intracellular signaling, neuronal calcium signaling as well as neurotransmission. Functions as a receptor for Pseudomonas aeruginosa exotoxin A.

抗原: A synthetic peptide of human LRP1

经过测试的应用: WB, IHC-F, IHC-P, ICC/IF, IP

推荐稀释比: WB: 1/500-1/1000 IHC: 1/50-1/100 IF: 1/50-1/200 IP: 1/20

种属反应性: Rabbit

克隆性: Rabbit Monoclonal

克隆编号: R09-4E8

分子量: Calculated MW: 505 kDa; Observed MW: 85 kDa

亚型: IgG

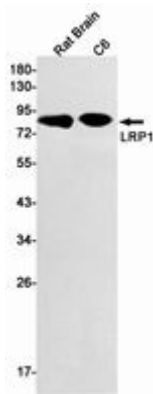
纯化: Affinity Purified

种属反应性: Human, Mouse and Rat

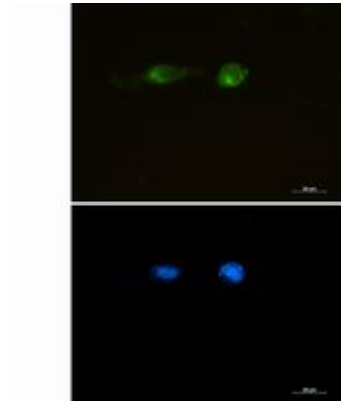
成分: PBS (without Mg²⁺ and Ca²⁺), pH 7.3 containing 50% glycerol, 0.5% BSA and 0.02% sodium azide

研究领域: Neuroscience

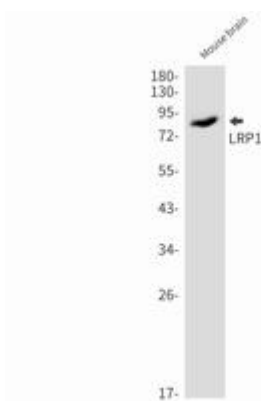
储存和运输: Store at -20°C. Avoid repeated freezing and thawing



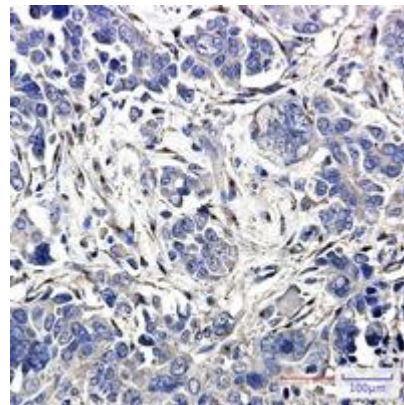
Western blot analysis of LRP1 in rat Brain, C6 lysates using LRP1 antibody



Immunocytochemistry analysis of LRP1 (green) in U87-MG using LRP1 antibody, and DAPI (blue).



Western blot analysis of LRP1 in mouse brain lysates using LRP1 antibody.



Immunohistochemistry analysis of paraffin-embedded Human Cholangiocarcinoma using LRP1 antibody. High-pressure and temperature Sodium Citrate pH 6.0 was used for antigen retrieval.