

## LPP (6F6) MOUSE MAB

货号: N261183

产品全名: LPP (6F6) 小鼠单抗

基因符号 LPP; Lipoma-preferred partner; LIM domain-containing preferred translocation partner in lipoma

**UNIPROT ID:** Q93052

背景: May play a structural role at sites of cell adhesion in maintaining cell shape and motility. In addition to these structural functions, it may also be implicated in signaling events and activation of gene transcription.

抗原: Purified recombinant fragment of human LPP expressed in E. Coli.

经过测试的应用: WB,IHC-F,IHC-P,ICC/IF,IP

推荐稀释比: WB: 1/500-1/1000 IHC: 1/50-1/100 IF: 1/50-1/200 IP: 1/20

种属反应性: Mouse

克隆性: Mouse Monoclonal

克隆编号: 6F6-C1-B6

分子量: Calculated MW: 66 kDa; Observed MW: 66 kDa

亚型: IgG1

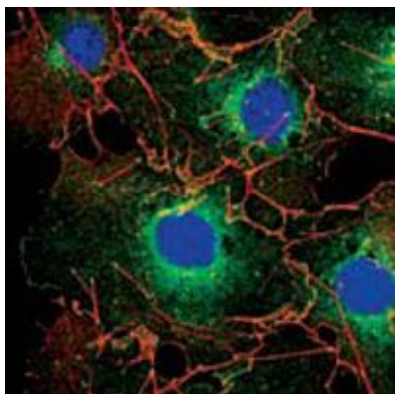
纯化: Ascitic Fluid

种属反应性: Human, Mouse and Rat,Monkey,Hamster

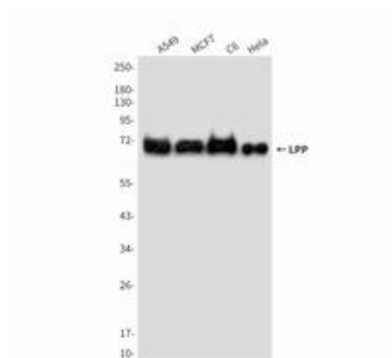
成分: PBS (without Mg<sup>2+</sup> and Ca<sup>2+</sup>), pH 7.3 containing 50% glycerol, 0.5% BSA and 0.02% sodium azide

研究领域: Signal Transduction

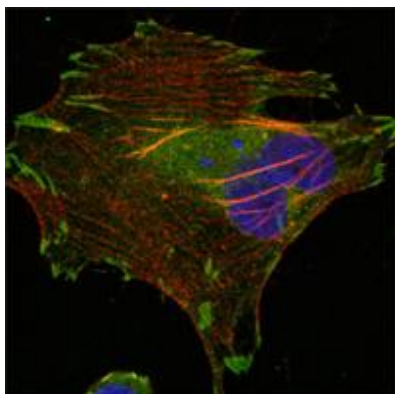
储存和运输: Store at -20°C. Avoid repeated freezing and thawing



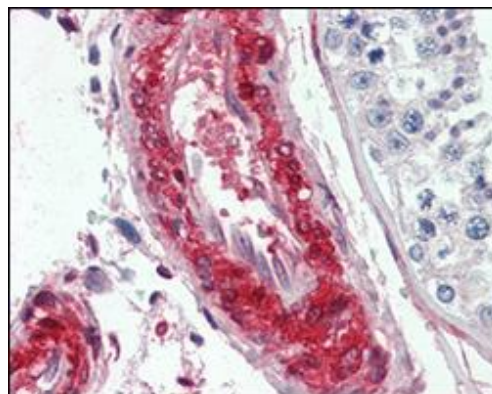
Immunofluorescence analysis of LPP (6F6) in COS using LPP antibody (green). Red: Actin filaments have been labeled using DY554 phalloidin. Blue: DRAQ5 fluorescent DNA dye.



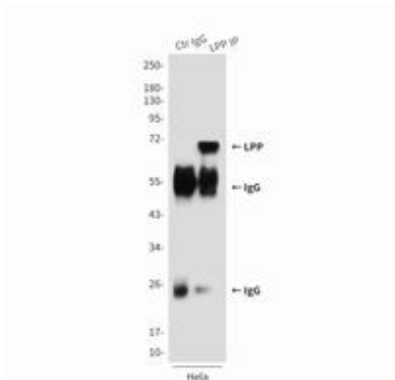
Western blot analysis of LPP in A549, MCF-7, C6 and HeLa lysates using LPP antibody.



Immunofluorescence analysis of LPP (6F6) in HeLa cells using LPP antibody (green). Red: Actin filaments have been labeled using DY554 phalloidin, and DAPI (blue). DRAQ5 fluorescent DNA dye.



Immunohistochemistry analysis of paraffin-embedded human vessels tissues using LPP antibody. High-pressure and temperature Sodium Citrate pH 6.0 was used for antigen retrieval.



Immunoprecipitation analysis of LPP in HeLa lysates using LPP (6F6) antibody.

