

LPAR6 RABBIT PAB

货号: S221290

产品全名: LPAR6 兔多抗

基因符号 LAH3; P2Y5; ARWH1; HYPT8; LPA-6; P2RY5

UNIPROT ID: P43657 (Gene Accession - NP_001155969)

背景: The protein encoded by this gene belongs to the family of G-protein coupled receptors, that are preferentially activated by adenosine and uridine nucleotides. This gene aligns with an internal intron of the retinoblastoma susceptibility gene in the reverse orientation. Alternative splicing results in multiple transcript variants.

抗原: Synthetic peptide of human LPAR6

经过测试的应用: ELISA, IHC

推荐稀释比: IHC: 50-200; ELISA: 5000-10000

种属反应性: Rabbit

克隆性: Rabbit Polyclonal

亚型: Immunogen-specific rabbit IgG

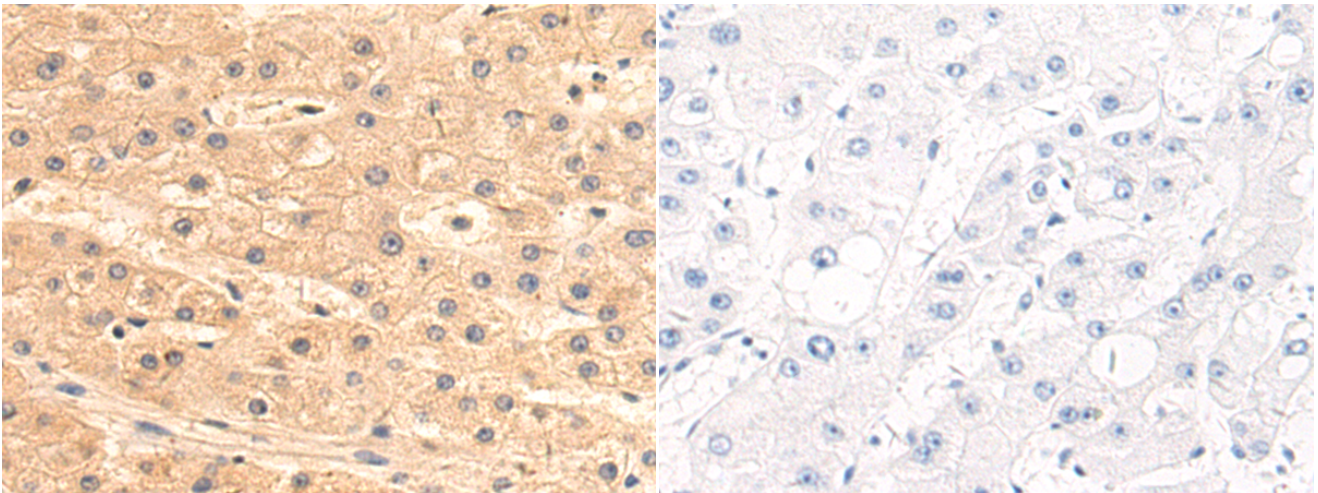
纯化: Antigen affinity purification

种属反应性: Human, Mouse, Rat

成分: PBS (without Mg²⁺ and Ca²⁺), pH 7.4, 150 mM NaCl, 0.05% Sodium Azide and 40% glycerol

研究领域: Signal Transduction

储存和运输: Store at -20°C. Avoid repeated freezing and thawing



Immunohistochemistry analysis of paraffin embedded Human liver cancer tissue using 221290 (LPAR6 Antibody) at a dilution of 1/50 (Cytoplasm and Cell membrane).

In comparison with the IHC on the left, the same paraffin-embedded Human liver cancer tissue is first treated with the synthetic peptide and then with 221290 (Anti-LPAR6 Antibody) at dilution 1/50.