

## LMO2 RABBIT MAB

货号: N262473

产品全名: LMO2 兔单克隆抗体

基因符号 TTG2; LMO-2; RBTN2; RHOM2; RBTN1

**UNIPROT ID:** P25791

背景: Acts with TAL1/SCL to regulate red blood cell development. Also acts with LDB1 to maintain erythroid precursors in an immature state.

抗原: A synthetic peptide of human LMO2

经过测试的应用: WB,IP

推荐稀释比: WB: 1/500-1/1000 IP: 1/20

种属反应性: Rabbit

克隆性: Rabbit Monoclonal

克隆编号: R06-5F6

分子量: Calculated MW: 18 kDa; Observed MW: 18 kDa

亚型: IgG

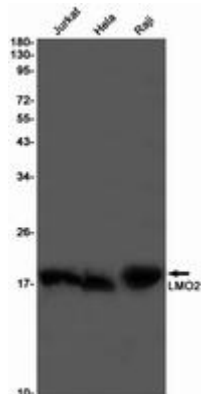
纯化: Affinity Purified

种属反应性: Human

成分: PBS (without Mg<sup>2+</sup> and Ca<sup>2+</sup>), pH 7.3 containing 50% glycerol, 0.5% BSA and 0.02% sodium azide

研究领域: Cardiovascular

储存和运输: Store at -20°C. Avoid repeated freezing and thawing



Western blot analysis of LMO2 in Jurkat, HeLa, Raji lysates using LMO2 antibody.