

LMNTD1 RABBIT PAB

货号: S218075

产品全名: LMNTD1 兔多抗

基因符号 IFLTD1; PAS1C1

UNIPROT ID: Q8N9Z9 (Gene Accession - BC037957)

背景: LMNTD1, also known as IFLTD1. IFLTD1 was initially identified as a candidate gene for pulmonary adenoma susceptibility 1 gene in mice. Transcripts of the gene were only detected in mouse lung tissue from strains carrying the Pas1-susceptible allele. Expression of different alleles of this gene in lung cancer cell lines resulted in different levels of colony formation in in vitro colony formation assays, suggesting that allelic variants of this gene can modulate growth of human cancer cells.

抗原: Fusion protein of human LMNTD1

经过测试的应用: ELISA, WB, IHC

推荐稀释比: IHC: Oct-50;WB: 200-1000;ELISA: 5000-10000

种属反应性: Rabbit

克隆性: Rabbit Polyclonal

亚型: Immunogen-specific rabbit IgG

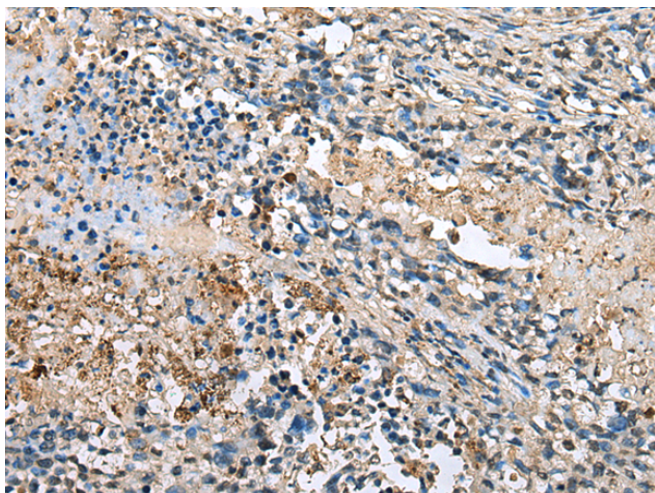
纯化: Antigen affinity purification

种属反应性: Human

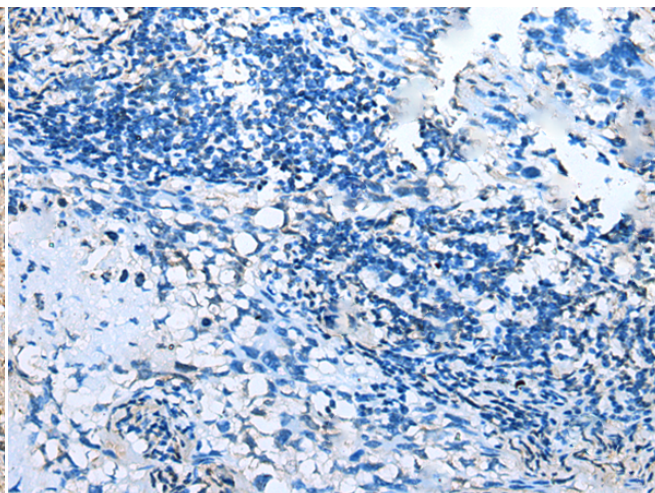
成分: PBS (without Mg²⁺ and Ca²⁺), pH 7.4, 150 mM NaCl, 0.05% Sodium Azide and 40% glycerol

研究领域: Cell Biology

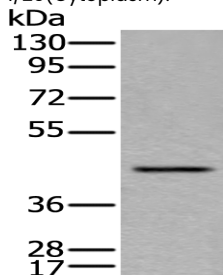
储存和运输: Store at -20°C. Avoid repeated freezing and thawing



Immunohistochemistry analysis of paraffin embedded Human lung cancer tissue using 218075(LMNTD1 Antibody) at a dilution of 1/20(Cytoplasm).



In comparison with the IHC on the left, the same paraffin-embedded Human lung cancer tissue is first treated with the fusion protein and then with 218075(Anti-LMNTD1 Antibody) at dilution 1/20.



Gel: 8%SDS-PAGE, Lysate: 40 µg;

Lane: HEPG2 cell lysate;

Primary antibody: 218075(LMNTD1 Antibody) at dilution 1/200;

Secondary antibody: Goat anti rabbit IgG at 1/8000 dilution;

Exposure time: 5 seconds