

## LMNB1 RABBIT PAB

货号: S216618

产品全名: LMNB1 兔多抗

基因符号: LMN; ADLD; LMN2; LMNB; MCPH26

**UNIPROT ID:** P20700 (Gene Accession - BC012295)

**背景:** This gene encodes one of the two B-type lamin proteins and is a component of the nuclear lamina. A duplication of this gene is associated with autosomal dominant adult-onset leukodystrophy (ADLD). Alternative splicing results in multiple transcript variants.

**抗原:** Fusion protein of human LMNB1

**经过测试的应用:** ELISA, WB, IHC

**推荐稀释比:** IHC: 50-200; WB: 1000-5000; ELISA: 5000-10000

**种属反应性:** Rabbit

**克隆性:** Rabbit Polyclonal

**亚型:** Immunogen-specific rabbit IgG

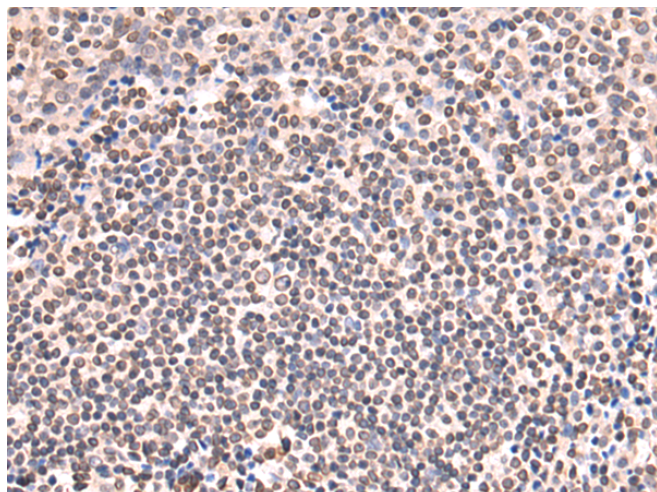
**纯化:** Antigen affinity purification

**种属反应性:** Human, Mouse, Rat

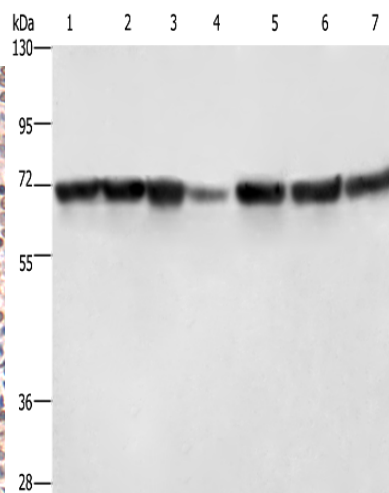
**成分:** PBS (without Mg<sup>2+</sup> and Ca<sup>2+</sup>), pH 7.4, 150 mM NaCl, 0.05% Sodium Azide and 40% glycerol

**研究领域:** Signal Transduction, Cancer

**储存和运输:** Store at -20°C. Avoid repeated freezing and thawing



Immunohistochemistry analysis of paraffin-embedded Human tonsil tissue using 216618(LMNB1 Antibody) at a dilution of 1/60(Nucleus).



Gel: 6%SDS-PAGE, Lysate: 40 µg;  
Lane 1-7: HeLa and HT-29 cells, human fetal liver and testis tissue, 231 and K562 cells, human bladder transitional cells carcinoma tissue lysates;  
Primary antibody: 216618(LMNB1 Antibody) at dilution 1/750;  
Secondary antibody: Goat anti rabbit IgG at 1/8000 dilution;  
Exposure time: 1 second