

LMLN RABBIT PAB

货号: S222236

产品全名: LMLN 兔多抗

基因符号 INV; MSP; GP63; IX14; LMNL1

UNIPROT ID: Q96KR4 (Gene Accession - NP_149018)

背景: This gene encodes a zinc-metalloproteinase. The encoded protein may play a role in cell migration and invasion. Studies of a similar protein in *Drosophila* indicate a potential role in mitotic progression. Alternatively spliced transcript variants have been described.

抗原: Synthetic peptide of human LMLN

经过测试的应用: ELISA, IHC

推荐稀释比: IHC: 25-100; ELISA: 5000-10000

种属反应性: Rabbit

克隆性: Rabbit Polyclonal

亚型: Immunogen-specific rabbit IgG

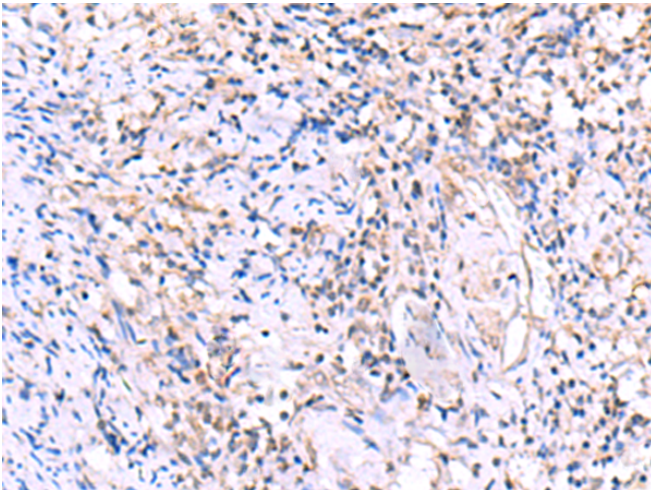
纯化: Antigen affinity purification

种属反应性: Human

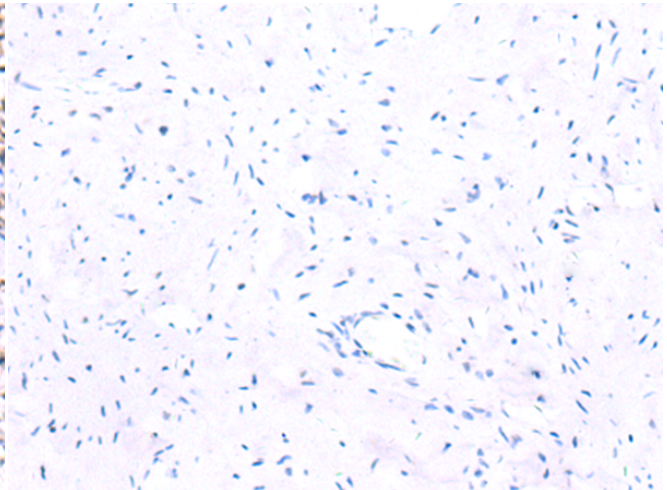
成分: PBS (without Mg²⁺ and Ca²⁺), pH 7.4, 150 mM NaCl, 0.05% Sodium Azide and 40% glycerol

研究领域: Cancer

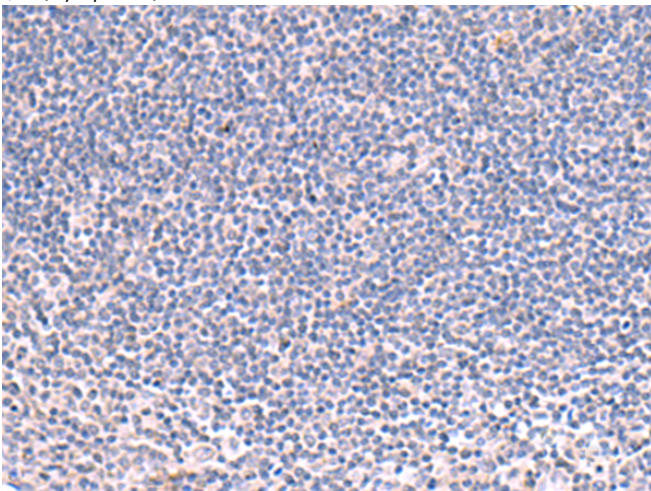
储存和运输: Store at -20°C. Avoid repeated freezing and thawing



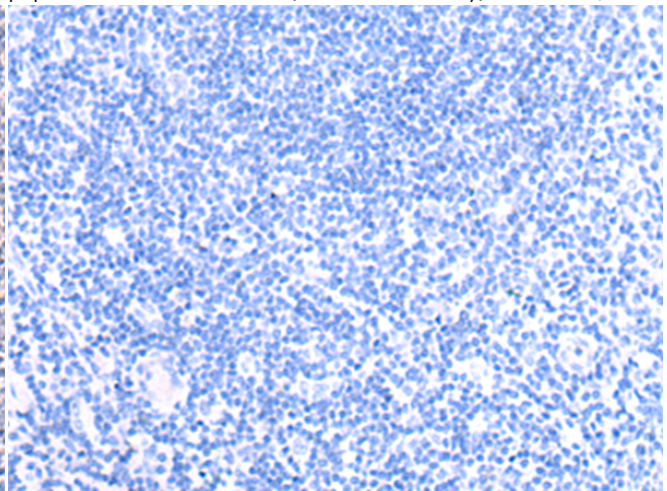
Immunohistochemistry analysis of paraffin embedded Human cervical cancer tissue using 222236(LMLN Antibody) at a dilution of 1/30(Cytoplasm).



In comparison with the IHC on the left, the same paraffin-embedded Human cervical cancer tissue is first treated with the synthetic peptide and then with 222236(Anti-LMLN Antibody) at dilution 1/30.



The image on the left is immunohistochemistry of paraffin-embedded Human tonsil tissue using 222236(Anti-LMLN Antibody) at a dilution of 1/30.



In comparison with the IHC on the left, the same paraffin-embedded Human tonsil tissue is first treated with synthetic peptide and then with D264263(Anti-LMLN Antibody) at dilution 1/30.



Product Description

Pioneering GTPase and Oncogene Product Development since 2010
