

## LMCD1 RABBIT PAB

货号: S219084

产品全名: LMCD1 兔多抗

基因符号

**UNIPROT ID:** Q9NZU5 (Gene Accession - BC000646)

**背景:** This gene encodes a member of the LIM-domain family of zinc finger proteins. The encoded protein contains an N-terminal cysteine-rich domain and two C-terminal LIM domains. The presence of LIM domains suggests involvement in protein-protein interactions. The protein may act as a co-regulator of transcription along with other transcription factors. Alternate splicing results in multiple transcript variants of this gene.

**抗原:** Fusion protein of human LMCD1

**经过测试的应用:** ELISA, WB, IHC

**推荐稀释比:** IHC: 50-300;WB: 500-2000;ELISA: 5000-10000

**种属反应性:** Rabbit

**克隆性:** Rabbit Polyclonal

**亚型:** Immunogen-specific rabbit IgG

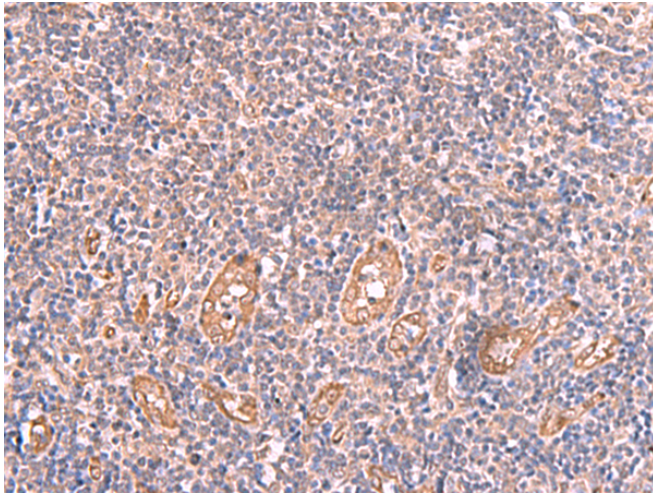
**纯化:** Antigen affinity purification

**种属反应性:** Human, Mouse

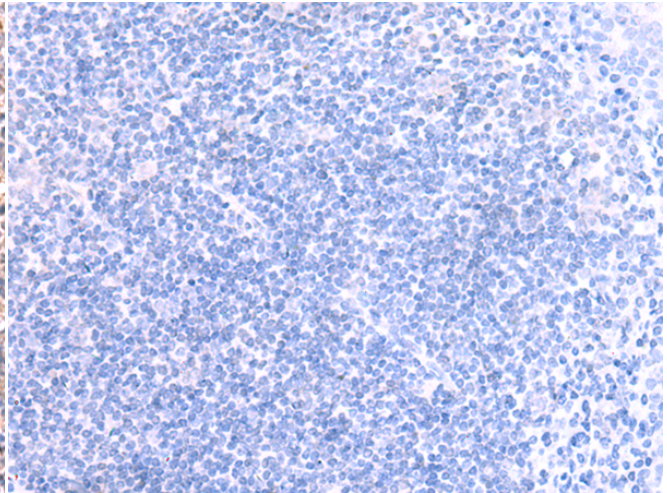
**成分:** PBS (without Mg<sup>2+</sup> and Ca<sup>2+</sup>), pH 7.4, 150 mM NaCl, 0.05% Sodium Azide and 40% glycerol

**研究领域:** Signal Transduction, Neuroscience

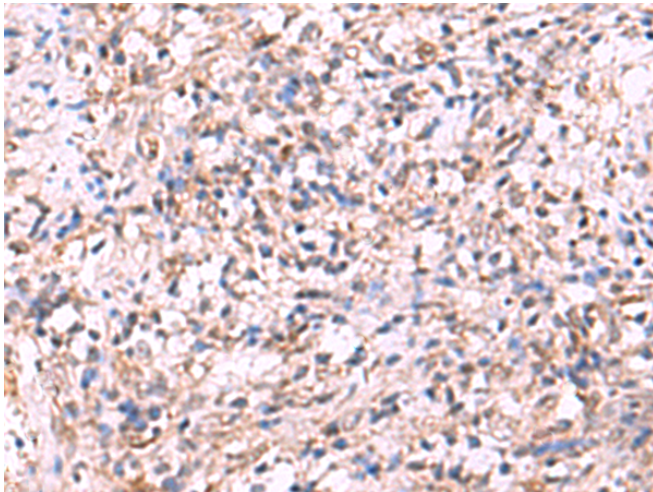
**储存和运输:** Store at -20°C. Avoid repeated freezing and thawing



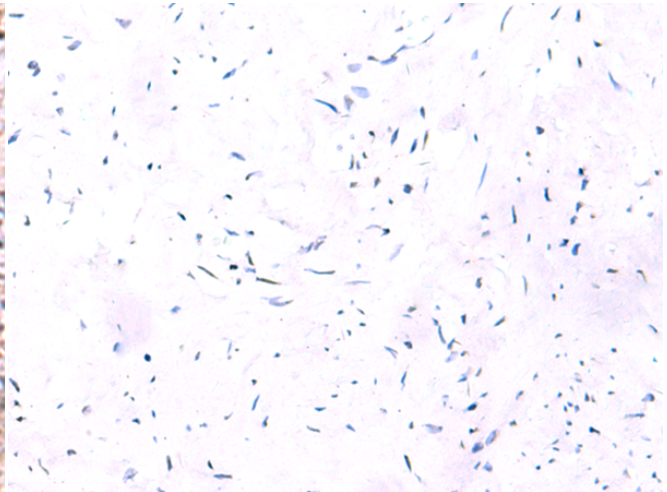
Immunohistochemistry analysis of paraffin embedded Human tonsil tissue using 219084(LMCD1 Antibody) at a dilution of 1/100(Cytoplasm).



In comparison with the IHC on the left, the same paraffin-embedded Human tonsil tissue is first treated with the fusion protein and then with 219084(Anti-LMCD1 Antibody) at dilution 1/100.

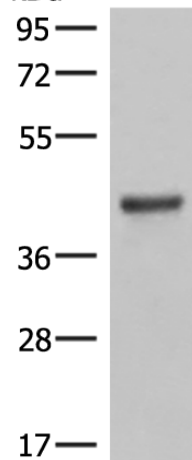


The image on the left is immunohistochemistry of paraffin-embedded Human cervical cancer tissue using 219084(Anti-LMCD1 Antibody) at a dilution of 1/100.



In comparison with the IHC on the left, the same paraffin-embedded Human cervical cancer tissue is first treated with fusion protein and then with D225805(Anti-LMCD1 Antibody) at dilution 1/100.

kDa



Gel: 8%SDS-PAGE, Lysate: 40 µg;  
Lane: Mouse Lung tissue lysates;  
Primary antibody: 219084(LMCD1 Antibody) at dilution 1/550;  
Secondary antibody: Goat anti rabbit IgG at 1/8000 dilution;  
Exposure time: 1 minute



# Product Description

Pioneering GTPase and Oncogene Product Development since 2010

---