

## LMAN1 RABBIT MAB

货号: N263408

产品全名: LMAN1 兔单克隆抗体

基因符号 ERGIC5; F5F8D; FMFD1; Gp58; Lman1; MCFD1; MR60

**UNIPROT ID:** P49257

**背景:** Mannose-specific lectin. May recognize sugar residues of glycoproteins, glycolipids, or glycosylphosphatidyl inositol anchors and may be involved in the sorting or recycling of proteins, lipids, or both. The LMAN1-MCFD2 complex forms a specific cargo receptor for the ER-to-Golgi transport of selected proteins.

**抗原:** A synthetic peptide of human LMAN1

**经过测试的应用:** WB,IHC-P

**推荐稀释比:** WB: 1/500-1/1000 IHC: 1/50-1/100

**种属反应性:** Rabbit

**克隆性:** Rabbit Monoclonal

**克隆编号:** R03-5C3

**分子量:** Calculated MW: 58 kDa; Observed MW: 58 kDa

**亚型:** IgG

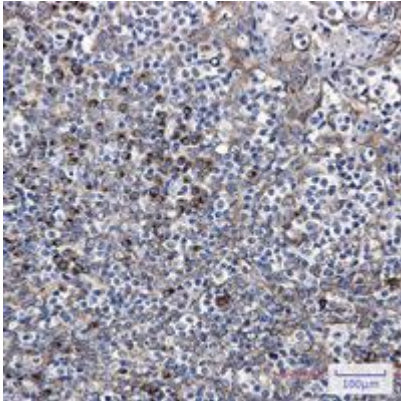
**纯化:** Affinity Purified

**种属反应性:** Human

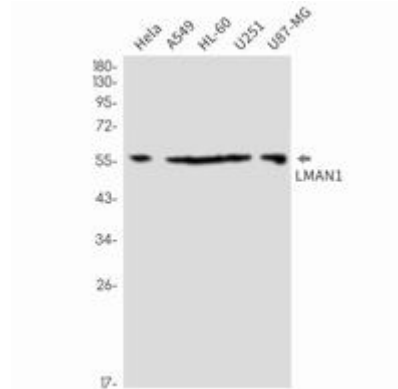
**成分:** PBS (without Mg<sup>2+</sup> and Ca<sup>2+</sup>), pH 7.3 containing 50% glycerol, 0.5% BSA and 0.02% sodium azide

**研究领域:** Signal Transduction

**储存和运输:** Store at -20°C. Avoid repeated freezing and thawing



Immunohistochemistry analysis of paraffin-embedded Human tonsil using LMAN1 antibody. High-pressure and temperature Sodium Citrate pH 6.0 was used for antigen retrieval.



Western blot analysis of LMAN1 in Hela, A549, HL-60, U251, U87-MG lysates using LMAN1 antibody.