

LLGL2 RABBIT PAB

货号: S220677

产品全名: LLGL2 兔多抗

基因符号: HGL; LGL2; Hvgl-2

UNIPROT ID: Q6P1M3 (Gene Accession - NP_001015002)

背景: The lethal (2) giant larvae protein of *Drosophila* plays a role in asymmetric cell division, epithelial cell polarity, and cell migration. This human gene encodes a protein similar to lethal (2) giant larvae of *Drosophila*. In fly, the protein's ability to localize cell fate determinants is regulated by the atypical protein kinase C (α PKC). In human, this protein interacts with α PKC-containing complexes and is cortically localized in mitotic cells. Alternative splicing results in multiple transcript variants encoding different isoforms.

抗原: Synthetic peptide of human LLGL2

经过测试的应用: ELISA, IHC

推荐稀释比: IHC: 25-100; ELISA: 2000-5000

种属反应性: Rabbit

克隆性: Rabbit Polyclonal

亚型: Immunogen-specific rabbit IgG

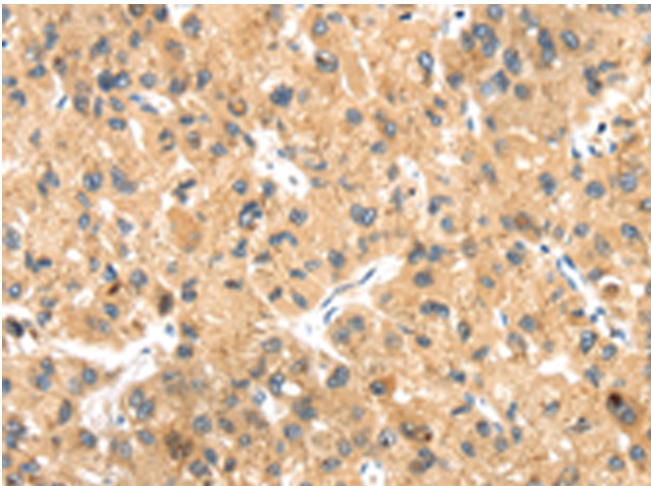
纯化: Antigen affinity purification

种属反应性: Human, Mouse

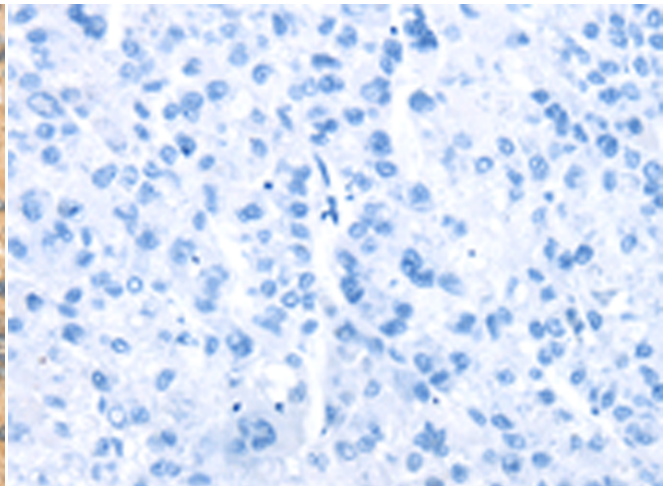
成分: PBS (without Mg^{2+} and Ca^{2+}), pH 7.4, 150 mM NaCl, 0.05% Sodium Azide and 40% glycerol

研究领域: Cancer

储存和运输: Store at $-20^{\circ}C$. Avoid repeated freezing and thawing



Immunohistochemistry analysis of paraffin embedded Human liver cancer tissue using 220677(LLGL2 Antibody) at a dilution of 1/20(Cytoplasm).



In comparison with the IHC on the left, the same paraffin-embedded Human liver cancer tissue is first treated with the synthetic peptide and then with 220677(Anti-LLGL2 Antibody) at dilution 1/20.