

LIS1 RABBIT MAB

货号: N262470

产品全名: LIS1 兔单克隆抗体

基因符号 MDS; LIS1; LIS2; MDCR; NudF; PAFAH

UNIPROT ID: P43034

背景: Required for proper activation of Rho GTPases and actin polymerization at the leading edge of locomoting cerebellar neurons and postmigratory hippocampal neurons in response to calcium influx triggered via NMDA receptors.

抗原: A synthetic peptide of human LIS1

经过测试的应用: WB,IP

推荐稀释比: WB: 1/500-1/1000 IP: 1/20

种属反应性: Rabbit

克隆性: Rabbit Monoclonal

克隆编号: R03-210

分子量: Calculated MW: 47 kDa; Observed MW: 47 kDa

亚型: IgG

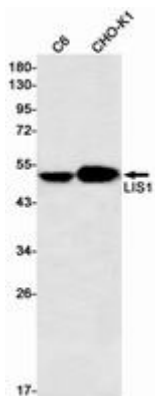
纯化: Affinity Purified

种属反应性: Hamster,Rat

成分: PBS (without Mg²⁺ and Ca²⁺), pH 7.3 containing 50% glycerol, 0.5% BSA and 0.02% sodium azide

研究领域: Neuroscience

储存和运输: Store at -20°C. Avoid repeated freezing and thawing



Western blot analysis of LIS1 in C6, CHO-K1 lysates using LIS1 antibody.