

LIPIN 1 RABBIT PAB

货号: N226029

产品全名: Lipin 1 兔多抗

基因符号 Lipin-1; Lpin1; PAPI

UNIPROT ID: Q14693

背景: Plays important roles in controlling the metabolism of fatty acids at different levels. Acts as a magnesium-dependent phosphatidate phosphatase enzyme which catalyzes the conversion of phosphatidic acid to diacylglycerol during triglyceride, phosphatidylcholine and phosphatidylethanolamine biosynthesis in the reticulum endoplasmic membrane.

抗原: A synthetic peptide of human Lipin 1

经过测试的应用: WB,IHC-F,IHC-P,ICC/IF,FC,IP

推荐稀释比: WB: 1/500-1/1000 IHC: 1/50-1/100 IF: 1/50-1/200 IP: 1/20 FC: 1/50-1/100

种属反应性: Rabbit

克隆性: Rabbit Polyclonal

分子量: Calculated MW: 99 kDa; Observed MW: 130 kDa

亚型: IgG

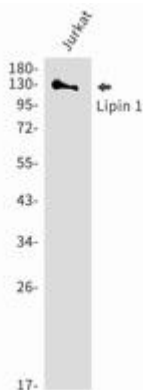
纯化: Affinity Purified

种属反应性: Human

成分: PBS (without Mg²⁺ and Ca²⁺), pH 7.3 containing 50% glycerol, 0.5% BSA and 0.02% sodium azide

研究领域: Cardiovascular

储存和运输: Store at -20°C. Avoid repeated freezing and thawing



Western blot analysis of Lipin 1 in Jurkat lysates using Lipin 1 antibody.



Product Description

Pioneering GTPase and Oncogene Product Development since 2010
