

LIPG RABBIT PAB

货号: S217402

产品全名: LIPG 兔多抗

基因符号: EL; EDL; PRO719

UNIPROT ID: Q9Y5X9 (Gene Accession - BC060825)

背景: The protein encoded by this gene has substantial phospholipase activity and may be involved in lipoprotein metabolism and vascular biology. This protein is designated a member of the TG lipase family by its sequence and characteristic lid region which provides substrate specificity for enzymes of the TG lipase family.

抗原: Fusion protein of human LIPG

经过测试的应用: ELISA, WB, IHC

推荐稀释比: IHC: 25-100;WB: 200-1000;ELISA: 5000-10000

种属反应性: Rabbit

克隆性: Rabbit Polyclonal

亚型: Immunogen-specific rabbit IgG

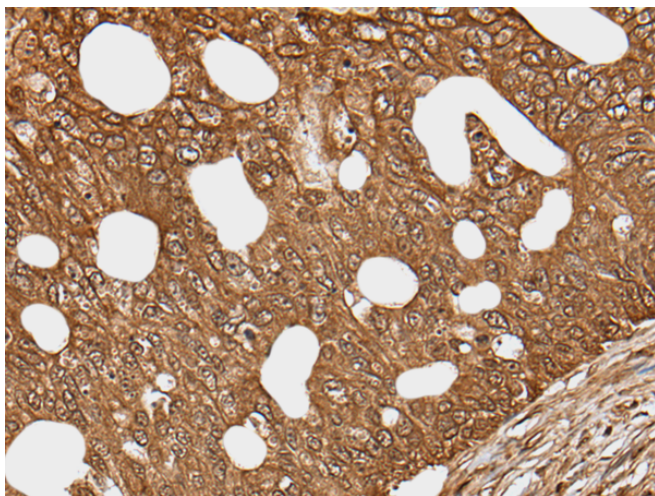
纯化: Antigen affinity purification

种属反应性: Human

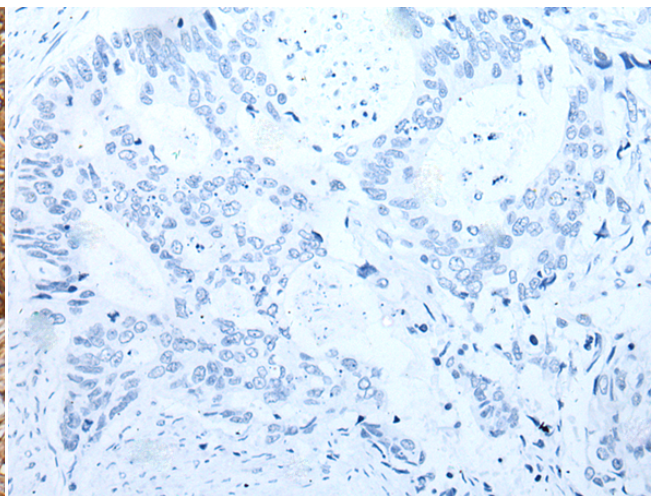
成分: PBS (without Mg²⁺ and Ca²⁺), pH 7.4, 150 mM NaCl, 0.05% Sodium Azide and 40% glycerol

研究领域: Metabolism, Cardiovascular

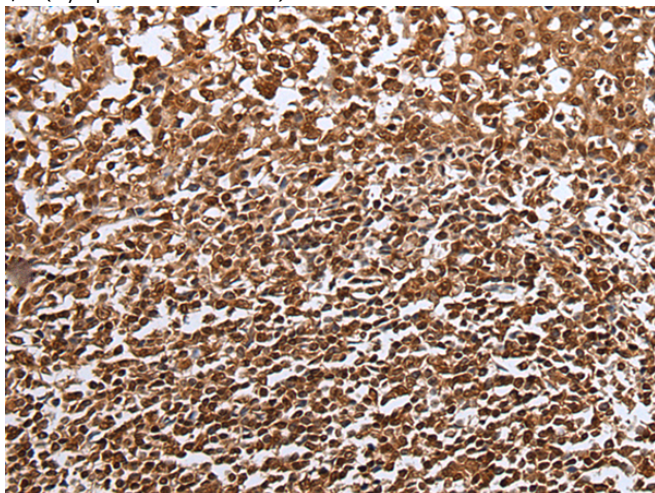
储存和运输: Store at -20°C. Avoid repeated freezing and thawing



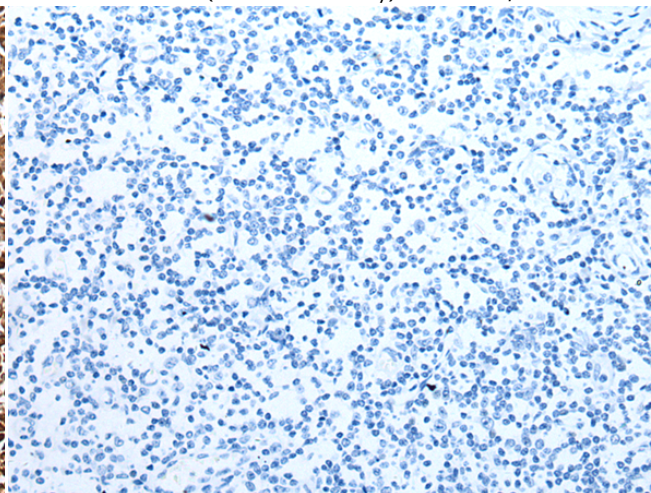
Immunohistochemistry analysis of paraffin embedded Human colorectal cancer tissue using 217402(LIPG Antibody) at a dilution of 1/30(Cytoplasm and Nucleus).



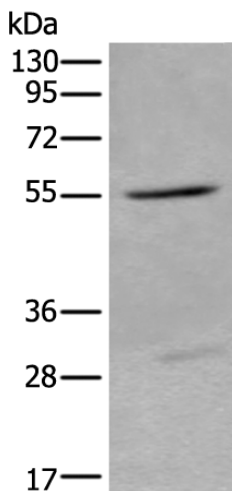
In comparison with the IHC on the left, the same paraffin-embedded Human colorectal cancer tissue is first treated with the fusion protein and then with 217402(Anti-LIPG Antibody) at dilution 1/30.



The image on the left is immunohistochemistry of paraffin-embedded Human tonsil tissue using 217402(Anti-LIPG Antibody) at a dilution of 1/30.



In comparison with the IHC on the left, the same paraffin-embedded Human tonsil tissue is first treated with fusion protein and then with D222302(Anti-LIPG Antibody) at dilution 1/30.



Gel: 8%SDS-PAGE, Lysate: 40 µg;
Lane: Human fetal liver tissue lysate;
Primary antibody: 217402(LIPG Antibody) at dilution 1/250;
Secondary antibody: Goat anti rabbit IgG at 1/8000 dilution;
Exposure time: 2 minutes



Product Description

Pioneering GTPase and Oncogene Product Development since 2010
