

LIPC RABBIT PAB

货号: S217500

产品全名: LIPC 兔多抗

基因符号: HL; HTGL; LIPH; HDLCQ12

UNIPROT ID: P11150 (Gene Accession - BC132825)

背景: LIPC encodes hepatic triglyceride lipase, which is expressed in liver. LIPC has the dual functions of triglyceride hydrolase and ligand/bridging factor for receptor-mediated lipoprotein uptake.

抗原: Fusion protein of human LIPC

经过测试的应用: ELISA, WB, IHC

推荐稀释比: IHC: 200-300;WB: 1000-5000;ELISA: 5000-10000

种属反应性: Rabbit

克隆性: Rabbit Polyclonal

亚型: Immunogen-specific rabbit IgG

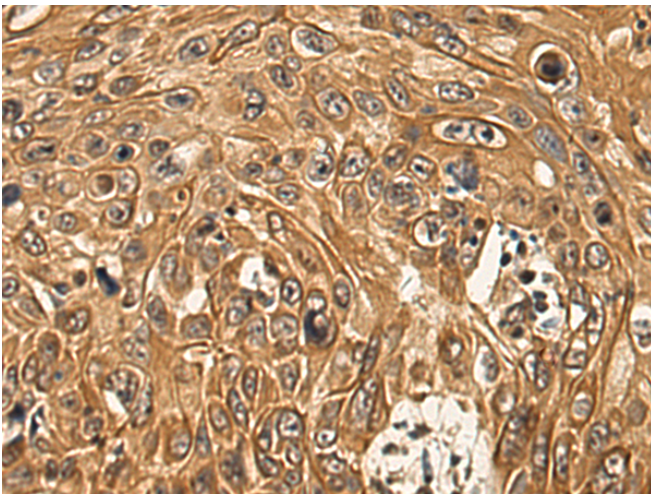
纯化: Antigen affinity purification

种属反应性: Human, Mouse

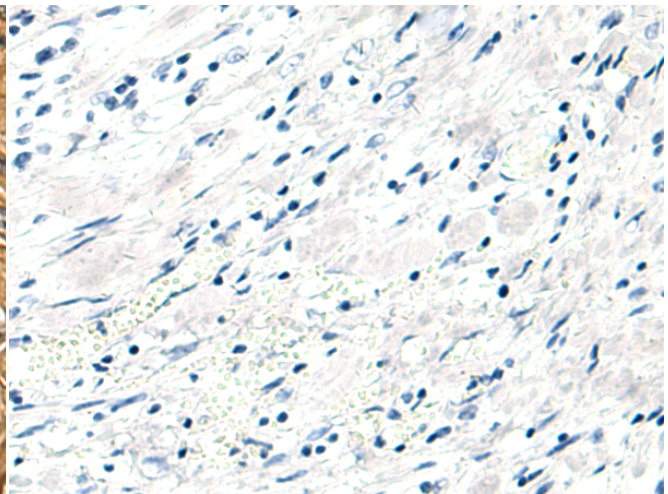
成分: PBS (without Mg²⁺ and Ca²⁺), pH 7.4, 150 mM NaCl, 0.05% Sodium Azide and 40% glycerol

研究领域: Metabolism, Cardiovascular

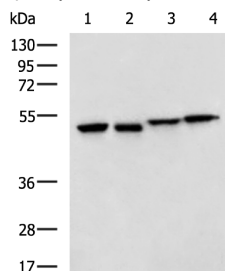
储存和运输: Store at -20°C. Avoid repeated freezing and thawing



Immunohistochemistry analysis of paraffin embedded Human esophagus cancer tissue using 217500(LIPC Antibody) at a dilution of 1/150(Secreted).



In comparison with the IHC on the left, the same paraffin-embedded Human esophagus cancer tissue is first treated with the fusion protein and then with 217500(Anti-LIPC Antibody) at dilution 1/150.



Gel: 8%SDS-PAGE, Lysate: 40 µg;

Lane 1-4: LOVO, HT-29, K562 and NIH/3T3 cell lysates;

Primary antibody: 217500(LIPC Antibody) at dilution 1/1150;

Secondary antibody: HRP-conjugated Goat anti rabbit IgG at 1/5000 dilution;

Exposure time: 10 seconds