

## LINE 1 ORF1P RABBIT MAB

货号: N263406

产品全名: LINE 1 ORF1p 兔单克隆抗体

基因符号 L1ORF1p; L1RE1; LRE1

**UNIPROT ID:** Q9UN81

背景: Nucleic acid-binding protein which is essential for retrotransposition of LINE-1 elements in the genome.

抗原: Recombinant protein of human LINE-1 ORF1p

经过测试的应用: WB,IP

推荐稀释比: WB: 1/500-1/1000 IP: 1/20

种属反应性: Rabbit

克隆性: Rabbit Monoclonal

克隆编号: R02-2H1

分子量: Calculated MW: 40 kDa; Observed MW: 40 kDa

亚型: IgG

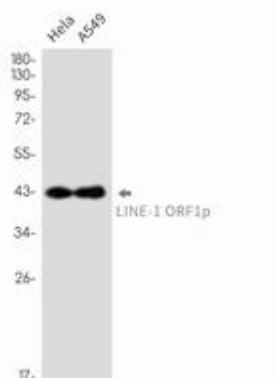
纯化: Affinity Purified

种属反应性: Human

成分: PBS (without Mg<sup>2+</sup> and Ca<sup>2+</sup>), pH 7.3 containing 50% glycerol, 0.5% BSA and 0.02% sodium azide

研究领域: Epigenetics and Nuclear Signaling

储存和运输: Store at -20°C. Avoid repeated freezing and thawing



Western blot analysis of LINE1 ORF1p in HeLa, A549 lysates using LINE 1 ORF1p antibody.