

LIN28A (9G2) MOUSE MAB

货号: N261188

产品全名: LIN28A (9G2) 小鼠单抗

基因符号 CSDD1; FLJ12457; LIN 28; Lin-28A; LIN28; LIN28A; LN28A_HUMAN;
Protein lin-28 homolog A; ZCCHC1; Zinc finger CCHC domain-containing protein 1.

UNIPROT ID: Q9H9Z2

背景: Involved in the timing of developmental events and choice of stage specific cell fates. Acts as a suppressor of microRNA (miRNA) biogenesis by specifically binding the precursor let-7 (pre-let-7), a miRNA precursor. Acts by binding pre-let-7 and recruiting ZCCHC1/TUT4 uridylyltransferase, leading to the terminal uridylation of pre-let-7.

抗原: Purified recombinant fragment of LIN28 (aa93-209) expressed in E. Coli.

经过测试的应用: WB, ICC/IF

推荐稀释比: WB: 1/500-1/1000 IF: 1/50-1/200

种属反应性: Mouse

克隆性: Mouse Monoclonal

克隆编号: 9G2-5B6-1D1

分子量: Calculated MW: 23 kDa; Observed MW: 23 kDa

亚型: IgG1

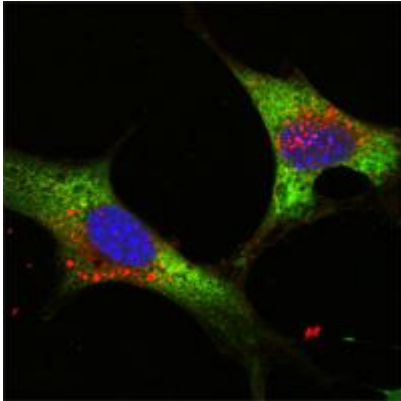
纯化: Ascitic Fluid

种属反应性: Human

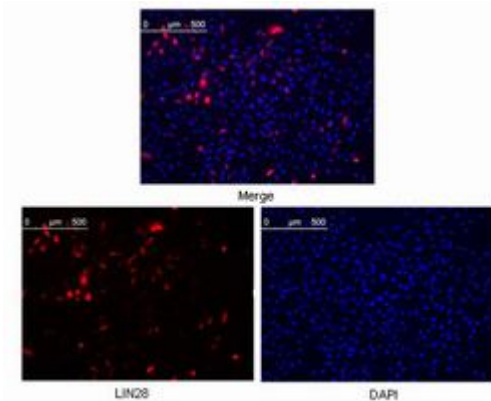
成分: PBS (without Mg²⁺ and Ca²⁺), pH 7.3 containing 50% glycerol, 0.5% BSA and 0.02% sodium azide

研究领域: Epigenetics and Nuclear Signaling

储存和运输: Store at -20°C. Avoid repeated freezing and thawing



Immunofluorescence analysis of LIN28A (9G2) in NTERA-2 cells using LIN28A (9G2) antibody (green). Blue: DRAQ5 fluorescent DNA dye.



Immunofluorescence analysis of LIN28A (9G2) in Hela cells were transfected with pMX construct of Human LIN28 using LIN28A (9G2) antibody



Western blot analysis of LIN28A (9G2) in NTERA-2 lysates using LIN28A (9G2) antibody.