

LILRB5 RABBIT PAB

货号: S221450

产品全名: LILRB5 兔多抗

基因符号: LIR8; CD85C; LIR-8

UNIPROT ID: O75023 (Gene Accession - NP_006831)

背景: This gene is a member of the leukocyte immunoglobulin-like receptor (LIR) family, which is found in a gene cluster at chromosomal region 19q13.4. The encoded protein belongs to the subfamily B class of LIR receptors which contain two or four extracellular immunoglobulin domains, a transmembrane domain, and two to four cytoplasmic immunoreceptor tyrosine-based inhibitory motifs (ITIMs). Several other LIR subfamily B receptors are expressed on immune cells where they bind to MHC class I molecules on antigen-presenting cells and inhibit stimulation of an immune response. Multiple transcript variants encoding different isoforms have been found for this gene.

抗原: Synthetic peptide of human LILRB5

经过测试的应用: ELISA, WB, IHC

推荐稀释比: IHC: Oct-50;WB: 500-2000;ELISA: 5000-10000

种属反应性: Rabbit

克隆性: Rabbit Polyclonal

亚型: Immunogen-specific rabbit IgG

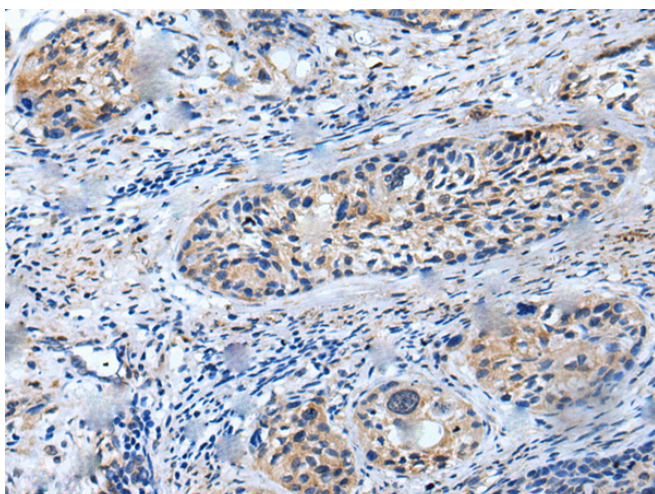
纯化: Antigen affinity purification

种属反应性: Human

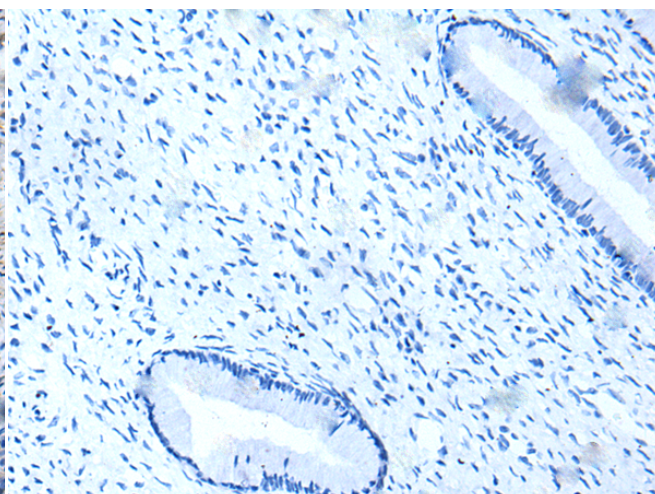
成分: PBS (without Mg²⁺ and Ca²⁺), pH 7.4, 150 mM NaCl, 0.05% Sodium Azide and 40% glycerol

研究领域: Immunology

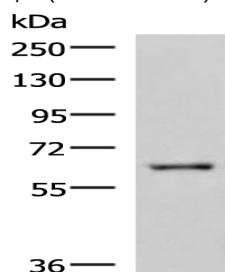
储存和运输: Store at -20°C. Avoid repeated freezing and thawing



Immunohistochemistry analysis of paraffin embedded Human cervical cancer tissue using 221450 (LILRB5 Antibody) at a dilution of 1/25 (Cell membrane).



In comparison with the IHC on the left, the same paraffin-embedded Human cervical cancer tissue is first treated with the synthetic peptide and then with 221450 (Anti-LILRB5 Antibody) at dilution 1/25.



Gel: 8% SDS-PAGE, Lysate: 40 µg;

Lane: HepG2 cell lysate;

Primary antibody: 221450 (LILRB5 Antibody) at dilution 1/600;

Secondary antibody: HRP-conjugated Goat anti rabbit IgG at 1/5000 dilution;

Exposure time: 3 minutes