

## LILRB1 RABBIT MAB

货号: N263404

产品全名: LILRB1 兔单克隆抗体

基因符号: ILT2; LIR1; MIR7; PIRB; CD85J; ILT-2; LIR-1; MIR-7; PIR-B

**UNIPROT ID:** Q8NHL6

背景: Receptor for class I MHC antigens.

抗原: Recombinant protein of human LILRB1

经过测试的应用: WB,IP

推荐稀释比: WB: 1/500-1/1000 IP: 1/20

种属反应性: Rabbit

克隆性: Rabbit Monoclonal

克隆编号: R05-2A4

分子量: Calculated MW: 71 kDa; Observed MW: 110 kDa

亚型: IgG

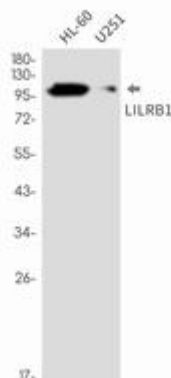
纯化: Affinity Purified

种属反应性: Human

成分: PBS (without Mg<sup>2+</sup> and Ca<sup>2+</sup>), pH 7.3 containing 50% glycerol, 0.5% BSA and 0.02% sodium azide

研究领域: Immunology

储存和运输: Store at -20°C. Avoid repeated freezing and thawing



Western blot analysis of LILRB1 in HL-60, U251 lysates using LILRB1 antibody.