

## LIG1 RABBIT MAB

货号: N263403

产品全名: LIG1 兔单克隆抗体

基因符号 LIG1; DNA ligase I; DNA ligase I; Polydeoxyribonucleotide synthase [ATP] 1

**UNIPROT ID:** P18858

背景: DNA ligase that seals nicks in double-stranded DNA during DNA replication, DNA recombination and DNA repair.

抗原: A synthetic peptide of human LIG1

经过测试的应用: WB,IHC-F,IHC-P,ICC/IF

推荐稀释比: WB: 1/500-1/1000 IHC: 1/50-1/100 IF: 1/50-1/200

种属反应性: Rabbit

克隆性: Rabbit Monoclonal

克隆编号: R02-5A2

分子量: Calculated MW: 102 kDa; Observed MW: 102 kDa

亚型: IgG

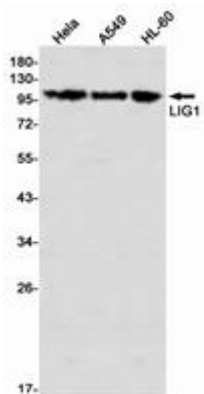
纯化: Affinity Purified

种属反应性: Human,Rat

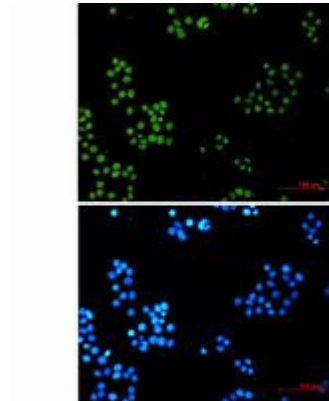
成分: PBS (without Mg<sup>2+</sup> and Ca<sup>2+</sup>), pH 7.3 containing 50% glycerol, 0.5% BSA and 0.02% sodium azide

研究领域: Epigenetics and Nuclear Signaling

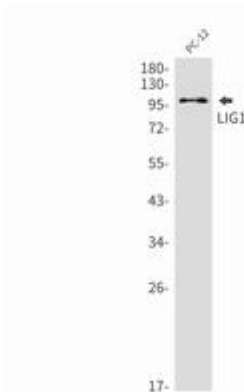
储存和运输: Store at -20°C. Avoid repeated freezing and thawing



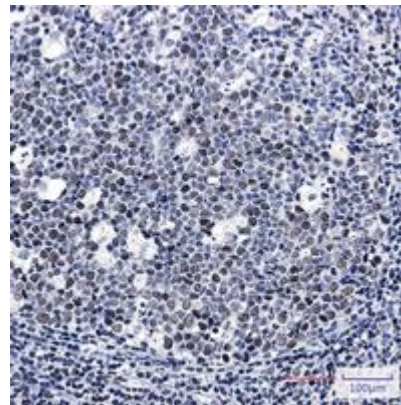
Western blot analysis of LIG1 in HeLa, A549, HL-60 lysates using LIG1 antibody



Immunocytochemistry analysis of LIG1 (green) in HeLa using LIG1 antibody, and DAPI (blue).



Western blot analysis of LIG1 in PC-12 lysates using LIG1 antibody.



Immunohistochemistry analysis of paraffin-embedded Human tonsil using LIG1 antibody. High-pressure and temperature Sodium Citrate pH 6.0 was used for antigen retrieval.