

## LGR6 RABBIT MAB

货号: N262298

产品全名: LGR6 兔单克隆抗体

基因符号 GPCR; Lgr6

**UNIPROT ID:** Q9HBX8

背景: Orphan receptor.

抗原: A synthetic peptide of human GPCR LGR6

经过测试的应用: WB,IHC-F,IHC-P,ICC/IF

推荐稀释比: WB: 1/500-1/1000 IHC: 1/50-1/100 IF: 1/50-1/200

种属反应性: Rabbit

克隆性: Rabbit Monoclonal

克隆编号: R09-8B5

分子量: Calculated MW: 104 kDa; Observed MW: 104 kDa

亚型: IgG

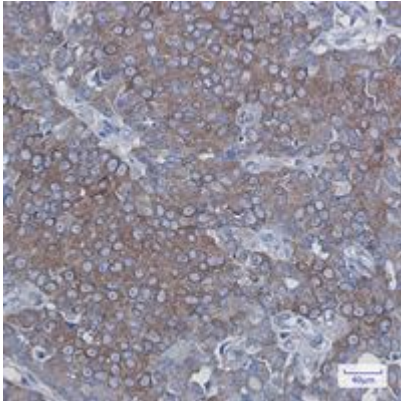
纯化: Affinity Purified

种属反应性: Human, Mouse and Rat

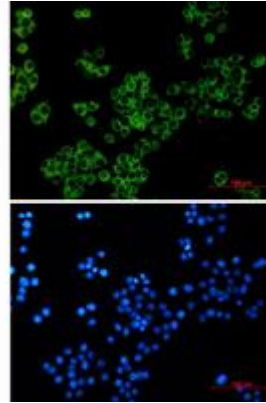
成分: PBS (without Mg<sup>2+</sup> and Ca<sup>2+</sup>), pH 7.3 containing 50% glycerol, 0.5% BSA and 0.02% sodium azide

研究领域: Signal Transduction

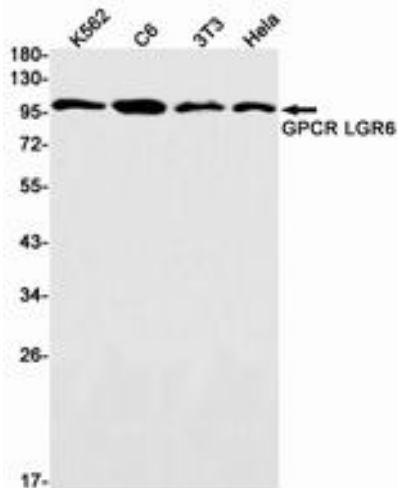
储存和运输: Store at -20°C. Avoid repeated freezing and thawing



Immunohistochemistry analysis of paraffin-embedded Human breast cancer tissue using GPCR LGR6 antibody. High-pressure and temperature Sodium Citrate pH 6.0 was used for antigen retrieval.



Immunocytochemistry analysis of LGR6 (green) in Hela using GPCR LGR6 antibody, and DAPI (blue).



Western blot analysis of GPCR LGR6 in K562, C6, 3T3, Hela lysates using GPCR LGR6 antibody.