

LGII RABBIT MAB

货号: N263402

产品全名: LGII 兔单克隆抗体

基因符号 ADLTE; ADPAEF; ADPEAF; Epitempin 1; EPITEMPIN; EPT; ETL1; LGII

UNIPROT ID: O95970

背景: Regulates voltage-gated potassium channels assembled from KCNA1, KCNA4 and KCNAB1. It slows down channel inactivation by precluding channel closure mediated by the KCNAB1 subunit. Ligand for ADAM22 that positively regulates synaptic transmission mediated by AMPA-type glutamate receptors (By similarity).

抗原: A synthetic peptide of human Lgil/EPT

经过测试的应用: WB,IP

推荐稀释比: WB: 1/500-1/1000 IP: 1/20

种属反应性: Rabbit

克隆性: Rabbit Monoclonal

克隆编号: R01-1H2

分子量: Calculated MW: 64 kDa; Observed MW: 64 kDa

亚型: IgG

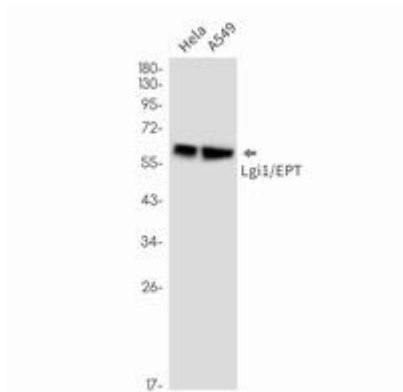
纯化: Affinity Purified

种属反应性: Human, Mouse and Rat

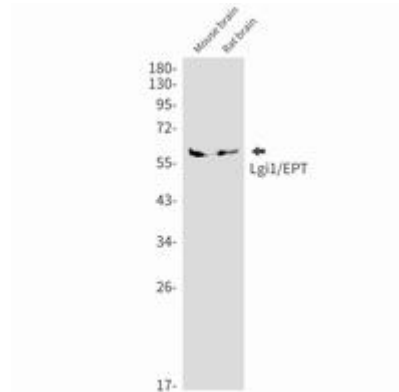
成分: PBS (without Mg²⁺ and Ca²⁺), pH 7.3 containing 50% glycerol, 0.5% BSA and 0.02% sodium azide

研究领域: Neuroscience

储存和运输: Store at -20°C. Avoid repeated freezing and thawing



Western blot analysis of Lgi1/EPT in HeLa, A549 lysates using Lgi1/EPT antibody.



Western blot analysis of Lgi1/EPT in mouse brain, rat brain lysates using LGII antibody.