

## LGALS4 RABBIT PAB

货号: S222058

产品全名: LGALS4 兔多抗

基因符号: GAL4; L36LBP

**UNIPROT ID:** P56470 (Gene Accession - NP\_006140)

**背景:** The galectins are a family of beta-galactoside-binding proteins implicated in modulating cell-cell and cell-matrix interactions. The expression of this gene is restricted to small intestine, colon, and rectum, and it is underexpressed in colorectal cancer.

**抗原:** Synthetic peptide of human LGALS4

**经过测试的应用:** ELISA, WB, IHC

**推荐稀释比:** IHC: 30-150;WB: 500-2000;ELISA: 5000-10000

**种属反应性:** Rabbit

**克隆性:** Rabbit Polyclonal

**亚型:** Immunogen-specific rabbit IgG

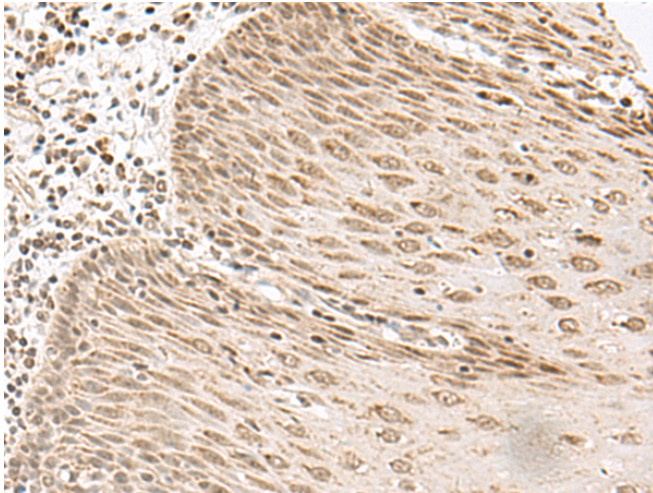
**纯化:** Antigen affinity purification

**种属反应性:** Human

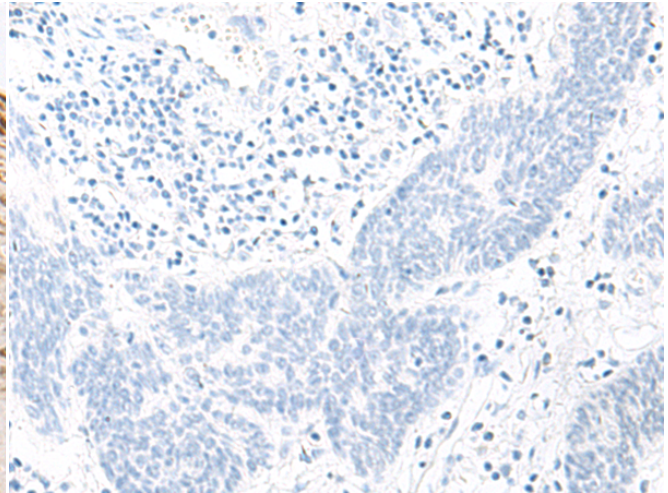
**成分:** PBS (without Mg<sup>2+</sup> and Ca<sup>2+</sup>), pH 7.4, 150 mM NaCl, 0.05% Sodium Azide and 40% glycerol

**研究领域:** Metabolism, Signal Transduction, Epigenetics and Nuclear Signaling

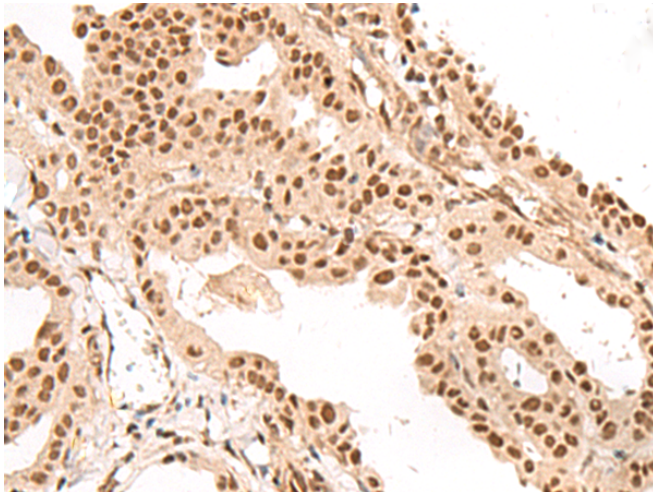
**储存和运输:** Store at -20°C. Avoid repeated freezing and thawing



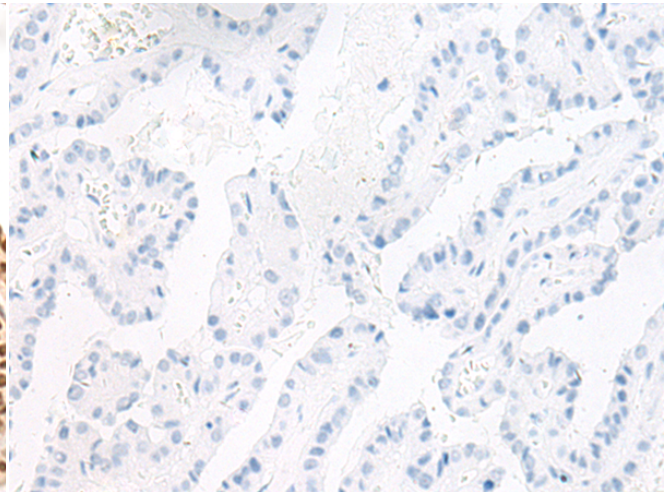
Immunohistochemistry analysis of paraffin embedded Human esophagus cancer tissue using 222058(LGALS4 Antibody) at a dilution of 1/35(Cytoplasm and Nucleus).



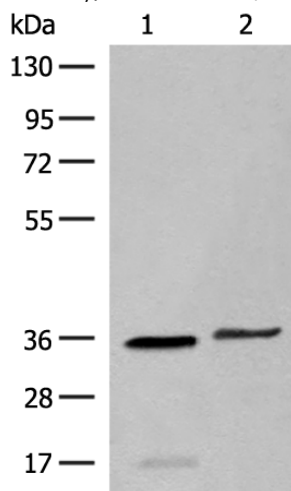
In comparison with the IHC on the left, the same paraffin-embedded Human esophagus cancer tissue is first treated with the synthetic peptide and then with 222058(Anti-LGALS4 Antibody) at dilution 1/35.



The image on the left is immunohistochemistry of paraffin-embedded Human thyroid cancer tissue using 222058(Anti-LGALS4 Antibody) at a dilution of 1/35.



In comparison with the IHC on the left, the same paraffin-embedded Human thyroid cancer tissue is first treated with synthetic peptide and then with D263960(Anti-LGALS4 Antibody) at dilution 1/35.



Gel: 8%SDS-PAGE, Lysate: 40 µg;  
Lane 1-2: Human sigmoid tissue and HT-29 cell lysates;  
Primary antibody: 222058(LGALS4 Antibody) at dilution 1/400;  
Secondary antibody: Goat anti rabbit IgG at 1/8000 dilution;  
Exposure time: 2 seconds

