

LGALS14 RABBIT MAB

货号: N262468

产品全名: LGALS14 兔单克隆抗体

基因符号 Charcot-Leyden crystal protein 2; CLC2; Galectin-14; Gal-14

UNIPROT ID: Q8TCE9

背景: Binds beta-galactoside and lactose.

抗原: A synthetic peptide of human LGALS14

经过测试的应用: WB,ICC/IF

推荐稀释比: WB: 1/500-1/1000 IF: 1/50-1/200

种属反应性: Rabbit

克隆性: Rabbit Monoclonal

克隆编号: R09-6C1

分子量: Calculated MW: 16 kDa; Observed MW: 16 kDa

亚型: IgG

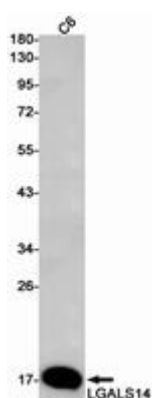
纯化: Affinity Purified

种属反应性: Rat

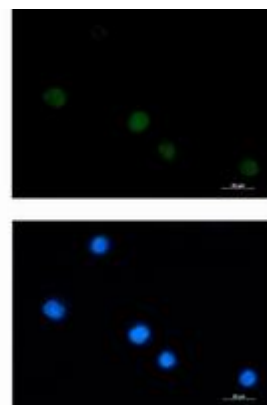
成分: PBS (without Mg²⁺ and Ca²⁺), pH 7.3 containing 50% glycerol, 0.5% BSA and 0.02% sodium azide

研究领域: Cell Biology

储存和运输: Store at -20°C. Avoid repeated freezing and thawing



Western blot analysis of LGALS14 in C6 lysates using LGALS14 antibody.



Immunocytochemistry analysis of LGALS14 (green) in K562 using LGALS14 antibody, and DAPI (blue).