

## LETM1 RABBIT PAB

货号: S219522

产品全名: LETM1 兔多抗

基因符号: SLC55A1

**UNIPROT ID:** O95202 (Gene Accession - BC014500 )

**背景:** This gene encodes a protein that is localized to the inner mitochondrial membrane. The protein functions to maintain the mitochondrial tubular shapes and is required for normal mitochondrial morphology and cellular viability. Mutations in this gene cause Wolf-Hirschhorn syndrome, a complex malformation syndrome caused by the deletion of parts of the distal short arm of chromosome 4. Related pseudogenes have been identified on chromosomes 8, 15 and 19.

**抗原:** Fusion protein of human LETM1

**经过测试的应用:** ELISA, WB, IHC

**推荐稀释比:** IHC: 100-200;WB: 1000-5000;ELISA: 5000-10000

**种属反应性:** Rabbit

**克隆性:** Rabbit Polyclonal

**亚型:** Immunogen-specific rabbit IgG

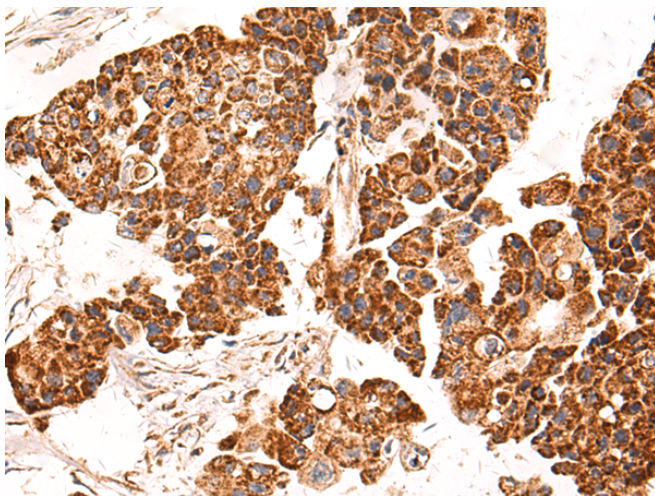
**纯化:** Antigen affinity purification

**种属反应性:** Human, Mouse, Rat

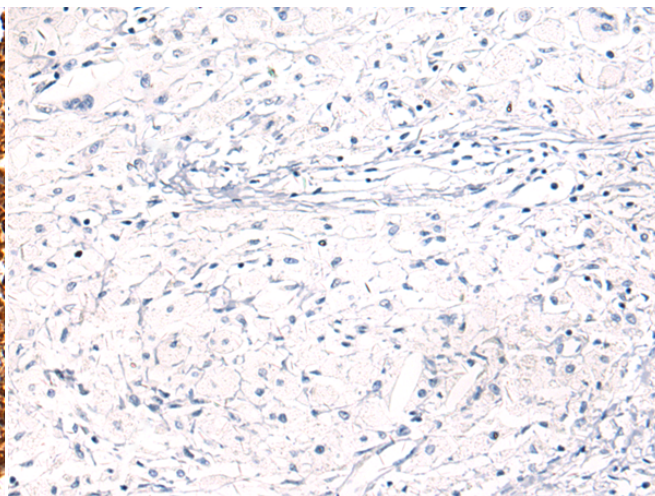
**成分:** PBS (without Mg<sup>2+</sup> and Ca<sup>2+</sup>), pH 7.4, 150 mM NaCl, 0.05% Sodium Azide and 40% glycerol

**研究领域:** Metabolism

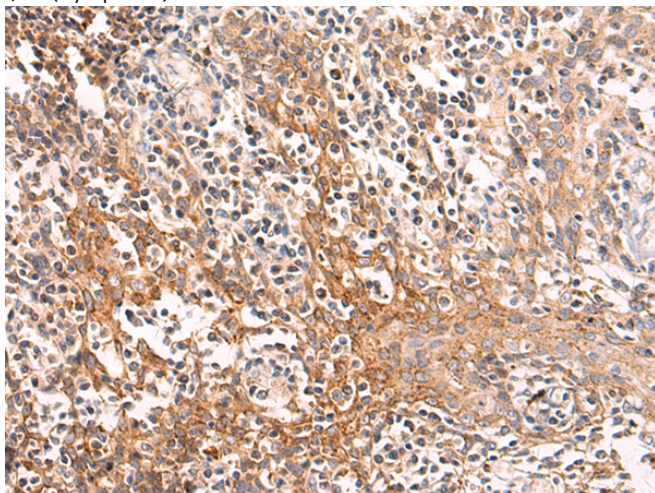
**储存和运输:** Store at -20°C. Avoid repeated freezing and thawing



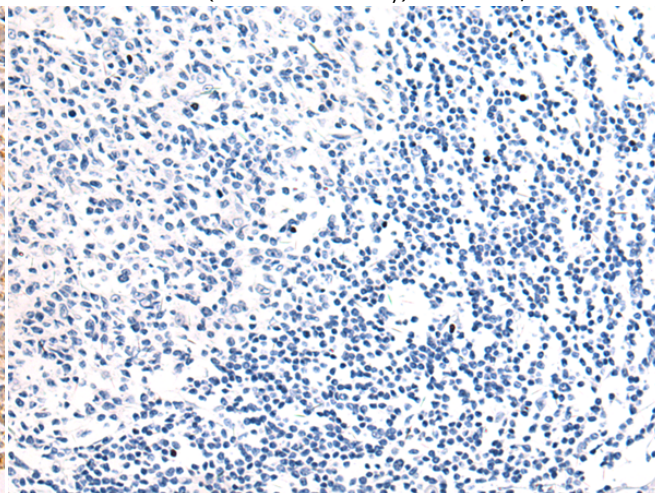
Immunohistochemistry analysis of paraffin embedded Human breast cancer tissue using 219522(LETMI Antibody) at a dilution of 1/100(Cytoplasm).



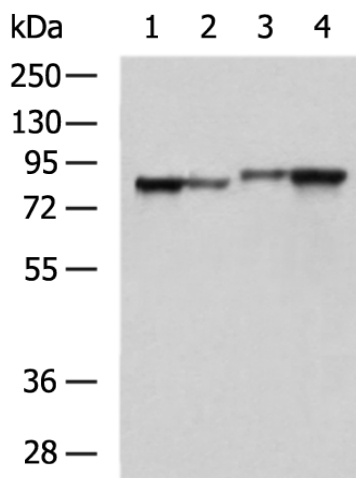
In comparison with the IHC on the left, the same paraffin-embedded Human breast cancer tissue is first treated with the fusion protein and then with 219522(Anti-LETMI Antibody) at dilution 1/100.



The image on the left is immunohistochemistry of paraffin-embedded Human tonsil tissue using 219522(Anti-LETMI Antibody) at a dilution of 1/100.



In comparison with the IHC on the left, the same paraffin-embedded Human tonsil tissue is first treated with fusion protein and then with D227471(Anti-LETMI Antibody) at dilution 1/100.



Gel: 8%SDS-PAGE, Lysate: 40 µg;  
 Lane 1-4: A549 cell, Rat liver tissue, Mouse liver tissue, LO2 cell lysates;  
 Primary antibody: 219522(LETMI Antibody) at dilution 1/900;  
 Secondary antibody: HRP-conjugated Goat anti rabbit IgG at 1/5000 dilution;  
 Exposure time: 1 second



# Product Description

Pioneering GTPase and Oncogene Product Development since 2010

---