

## LEO1 RABBIT PAB

货号: S219515

产品全名: LEO1 兔多抗

基因符号 RDL

**UNIPROT ID:** Q8WVC0 (Gene Accession - BC018147)

背景: LEO1, parafibromin (CDC73; MIM 607393), CTR9 (MIM 609366), and PAF1 (MIM 610506) form the PAF protein complex that associates with the RNA polymerase II subunit POLR2A (MIM 180660) and with a histone methyltransferase complex (Rozenblatt-Rosen et al., 2005 [PubMed 15632063]).

抗原: Fusion protein of human LEO1

经过测试的应用: ELISA, IHC

推荐稀释比: IHC: 150-300; ELISA: 5000-10000

种属反应性: Rabbit

克隆性: Rabbit Polyclonal

亚型: Immunogen-specific rabbit IgG

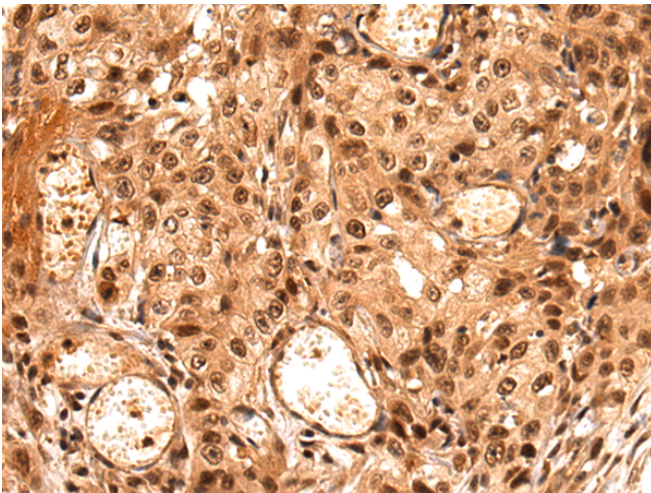
纯化: Antigen affinity purification

种属反应性: Human, Mouse, Rat

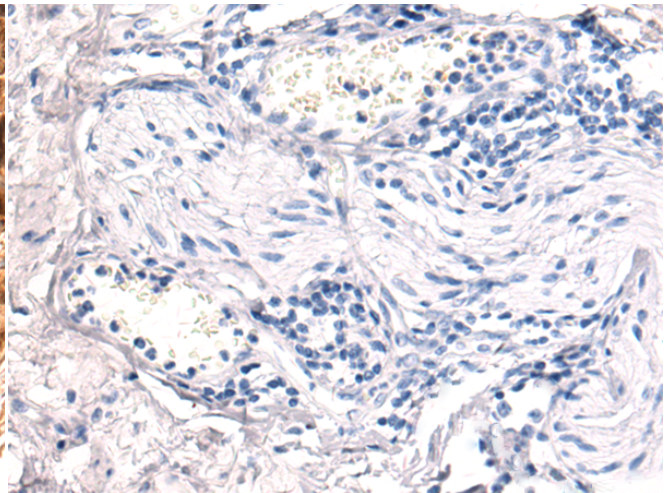
成分: PBS (without Mg<sup>2+</sup> and Ca<sup>2+</sup>), pH 7.4, 150 mM NaCl, 0.05% Sodium Azide and 40% glycerol

研究领域: Epigenetics and Nuclear Signaling

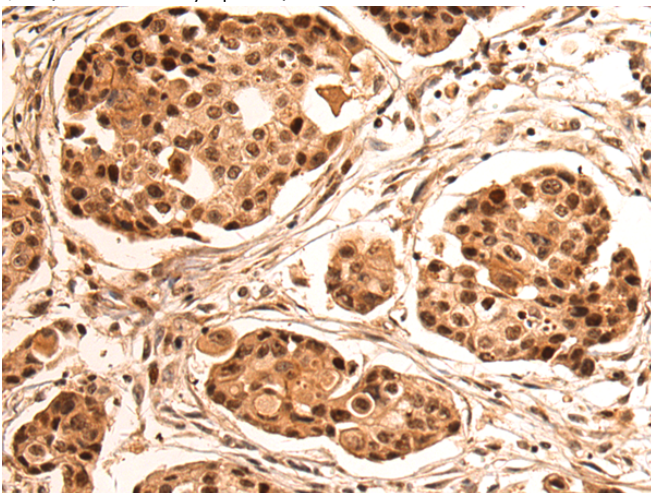
储存和运输: Store at -20°C. Avoid repeated freezing and thawing



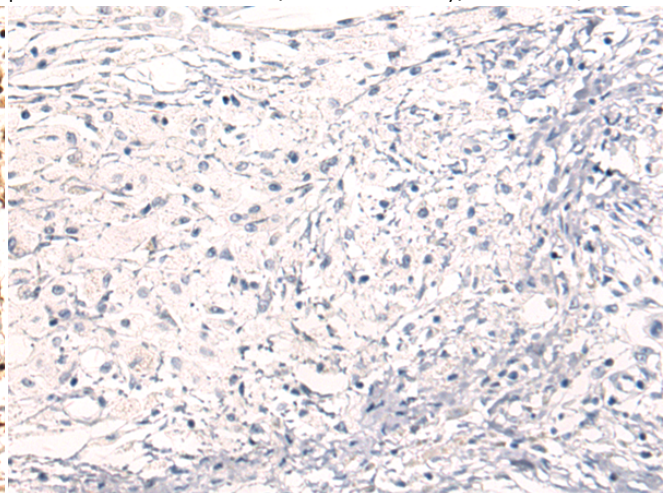
Immunohistochemistry analysis of paraffin embedded Human esophagus cancer tissue using 219515(LEO1 Antibody) at a dilution of 1/100 (Nucleus and Cytoplasm).



In comparison with the IHC on the left, the same paraffin-embedded Human esophagus cancer tissue is first treated with the fusion protein and then with 219515(Anti-LEO1 Antibody) at dilution 1/100.



The image on the left is immunohistochemistry of paraffin-embedded Human breast cancer tissue using 219515(Anti-LEO1 Antibody) at a dilution of 1/100.



In comparison with the IHC on the left, the same paraffin-embedded Human breast cancer tissue is first treated with fusion protein and then with D227449(Anti-LEO1 Antibody) at dilution 1/100.



# Product Description

Pioneering GTPase and Oncogene Product Development since 2010

---