

## LEF1 RABBIT MAB

货号: N262465

产品全名: LEF1 兔单克隆抗体

基因符号 LEF1; Lymphoid enhancer-binding factor 1; LEF-1; T cell-specific transcription factor 1-alpha; TCF1-alpha

**UNIPROT ID:** Q9UJU2

**背景:** Participates in the Wnt signaling pathway. Activates transcription of target genes in the presence of CTNNB1 and EP300. May play a role in hair cell differentiation and follicle morphogenesis. TLE1, TLE2, TLE3 and TLE4 repress transactivation mediated by LEF1 and CTNNB1. Regulates T-cell receptor alpha enhancer function. Binds DNA in a sequence-specific manner. PIAG antagonizes both Wnt-dependent and Wnt-independent activation by LEF1 (By similarity).

**抗原:** A synthetic peptide of human LEF1

**经过测试的应用:** WB, ICC/IF

**推荐稀释比:** WB: 1/500-1/1000 IF: 1/50-1/200

**种属反应性:** Rabbit

**克隆性:** Rabbit Monoclonal

**克隆编号:** R02-3A4

**分子量:** Calculated MW: 44 kDa; Observed MW: 25-58 kDa

**亚型:** IgG

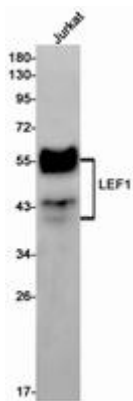
**纯化:** Affinity Purified

**种属反应性:** Human

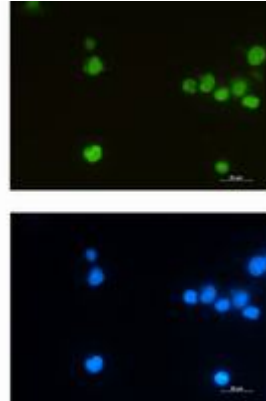
**成分:** PBS (without Mg<sup>2+</sup> and Ca<sup>2+</sup>), pH 7.3 containing 50% glycerol, 0.5% BSA and 0.02% sodium azide

**研究领域:** Epigenetics and Nuclear Signaling

**储存和运输:** Store at -20°C. Avoid repeated freezing and thawing



Western blot analysis of LEF1 in Jurkat lysates using LEF1 antibody.



Immunocytochemistry analysis of LEF1 (green) in Jurkat using LEF1 antibody, and DAPI (blue).