

LDHAL6B RABBIT PAB

货号: S219096

产品全名: LDHAL6B 兔多抗

基因符号 LDHL; LDH6B; LDHAL6

UNIPROT ID: Q9BYZ2 (Gene Accession - BC022034)

背景: LDHAL6B belongs to the LDH/MDH superfamily. LDH family. The specific function of the protein remains unknown.

抗原: Fusion protein of human LDHAL6B

经过测试的应用: ELISA, IHC

推荐稀释比: IHC: 50-300; ELISA: 5000-10000

种属反应性: Rabbit

克隆性: Rabbit Polyclonal

亚型: Immunogen-specific rabbit IgG

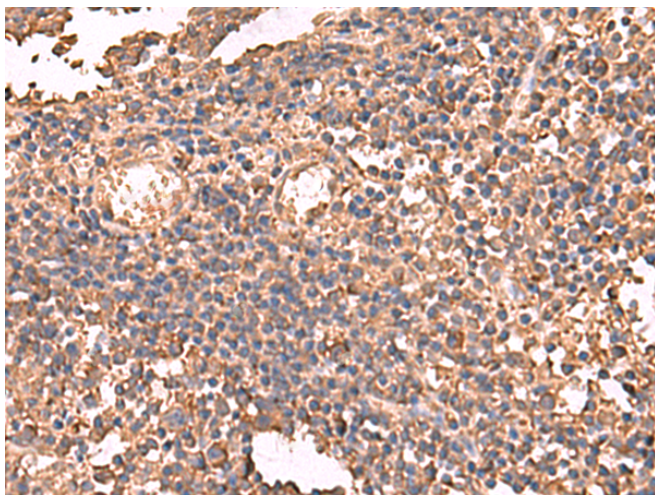
纯化: Antigen affinity purification

种属反应性: Human

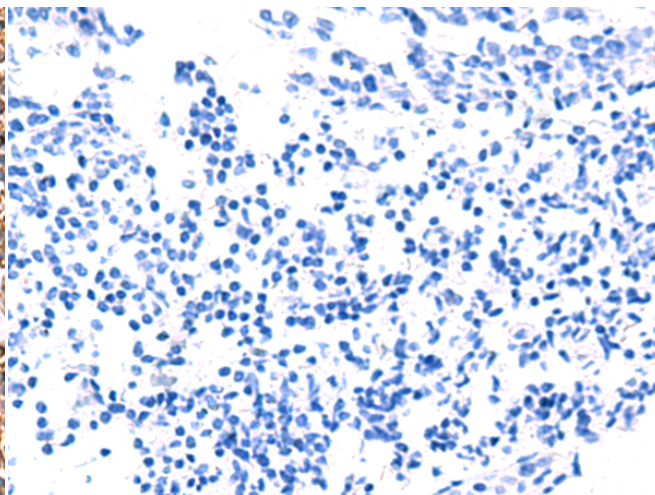
成分: PBS (without Mg²⁺ and Ca²⁺), pH 7.4, 150 mM NaCl, 0.05% Sodium Azide and 40% glycerol

研究领域: Metabolism

储存和运输: Store at -20°C. Avoid repeated freezing and thawing



Immunohistochemistry analysis of paraffin embedded Human tonsil tissue using 219096(LDHAL6B Antibody) at a dilution of 1/65(Cytoplasm).



In comparison with the IHC on the left, the same paraffin-embedded Human tonsil tissue is first treated with the fusion protein and then with 219096(Anti-LDHAL6B Antibody) at dilution 1/65.