

LC3B RABBIT PAB

货号: N225527

产品全名: LC3B 兔多抗

基因符号 MAP1LC3B

UNIPROT ID: Q9GZQ8

背景: Ubiquitin-like modifier involved in formation of autophagosomal vacuoles (autophagosomes). Plays a role in mitophagy which contributes to regulate mitochondrial quantity and quality by eliminating the mitochondria to a basal level to fulfill cellular energy requirements and preventing excess ROS production.

抗原: Recombinant Protein of MAP LC3 β

经过测试的应用: WB, ICC/IF, IHC-F, IHC-P

推荐稀释比: WB: 1/500-1/1000 IHC: 1/50-1/100 IF: 1/50-1/200

种属反应性: Rabbit

克隆性: Rabbit Polyclonal

分子量: Calculated MW: 15 kDa; Observed MW: 14,16 kDa

亚型: IgG

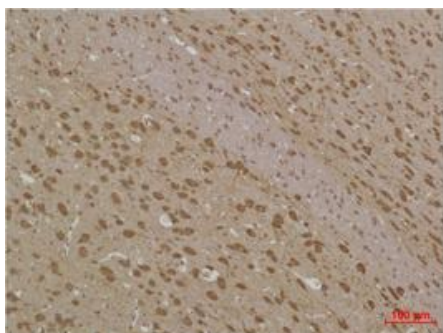
纯化: Affinity Purified

种属反应性: Human, Mouse and Rat

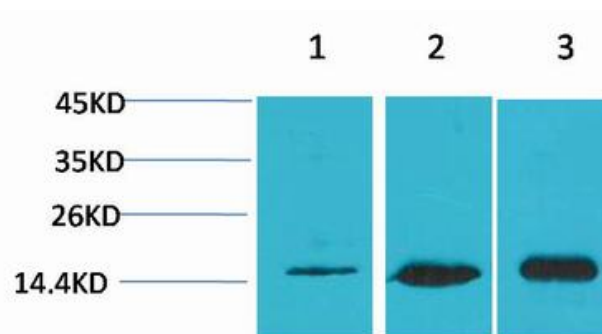
成分: PBS (without Mg²⁺ and Ca²⁺), pH 7.3 containing 50% glycerol, 0.5% BSA and 0.02% sodium azide

研究领域: Signal Transduction

储存和运输: Store at -20°C. Avoid repeated freezing and thawing



Immunohistochemistry analysis of paraffin-embedded rat Brain Tissue using LC3B antibody. High-pressure and temperature Sodium Citrate pH 6.0 was used for antigen retrieval.



Western blot analysis of LC3B in HeLa, 3T3, rat Brain lysates using LC3B antibody.