

LC3A RABBIT MAB

货号: N262487

产品全名: LC3A 兔单克隆抗体

基因符号 Microtubule-associated proteins 1A/1B light chain 3A;
Autophagy-related protein LC3 A; Autophagy-related ubiquitin-like modifier
LC3 A; MAP1 light chain 3-like protein 1; MAP1A/MAP1B light chain 3 A;
MAP1A/MAP1B LC3 A; Microtubule-associated protein 1 light chain 3 alpha

UNIPROT ID: Q9H492

背景: Autophagy marker Light Chain 3 (LC3) was originally identified as a subunit of microtubule-associated proteins 1A and 1B (termed MAP1LC3), and subsequently found to contain similarity to the yeast protein Apg8/Aut7/Cvt5 critical for autophagy. Three human LC3 isoforms (LC3A, LC3B, and LC3C) undergo post-translational modifications during autophagy. Cleavage of LC3 at the carboxy terminus immediately following synthesis yields the cytosolic LC3-I form.

抗原: A synthetic peptide of human MAP1LC3A

经过测试的应用: WB,IHC-P,IP

推荐稀释比: WB: 1/500-1/1000 IHC: 1/50-1/100 IP: 1/20

种属反应性: Rabbit

克隆性: Rabbit Monoclonal

克隆编号: R07-9B1

分子量: Calculated MW: 14 kDa; Observed MW: 14,16 kDa

亚型: IgG

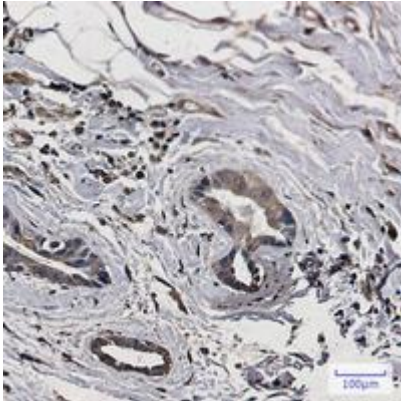
纯化: Affinity Purified

种属反应性: Human, Mouse and Rat

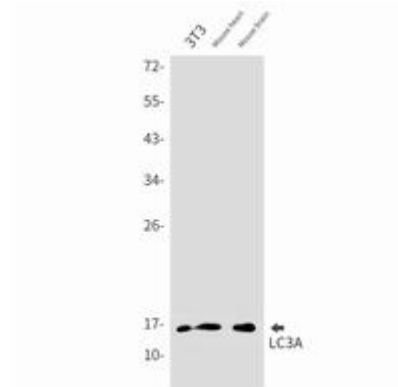
成分: PBS (without Mg²⁺ and Ca²⁺), pH 7.3 containing 50% glycerol, 0.5% BSA and 0.02% sodium azide

研究领域: Signal Transduction

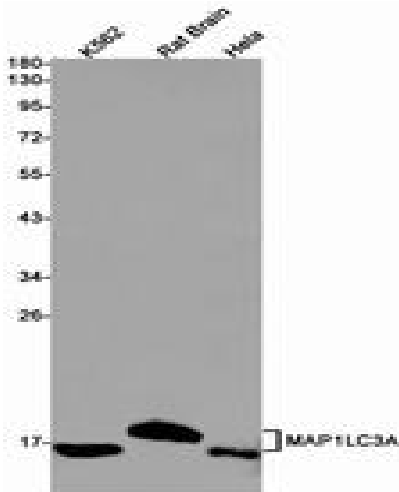
储存和运输: Store at -20°C. Avoid repeated freezing and thawing



Immunohistochemistry analysis of paraffin-embedded Human breast cancer using LC3A antibody. High-pressure and temperature Sodium Citrate pH 6.0 was used for antigen retrieval.



Western blot analysis of LC3A in 3T3, mouse heart, mouse brain lysates using LC3A antibody.



Western blot analysis of LC3A in K562, rat Brain, Hela lysates using LC3A antibody.