

## LC3A RABBIT MAB

货号: N263413

产品全名: LC3A 兔单克隆抗体

基因符号 Microtubule-associated proteins 1A/1B light chain 3A;  
Autophagy-related protein LC3 A; Autophagy-related ubiquitin-like modifier  
LC3 A; MAP1 light chain 3-like protein 1; MAP1A/MAP1B light chain 3 A;  
MAP1A/MAP1B LC3 A; Microtubule-associated protein 1 light chain 3 alpha

**UNIPROT ID:** Q9H492

背景: Autophagy marker Light Chain 3 (LC3) was originally identified as a subunit of microtubule-associated proteins 1A and 1B (termed MAP1LC3), and subsequently found to contain similarity to the yeast protein Apg8/Aut7/Cvt5 critical for autophagy. Three human LC3 isoforms (LC3A, LC3B, and LC3C) undergo post-translational modifications during autophagy. Cleavage of LC3 at the carboxy terminus immediately following synthesis yields the cytosolic LC3-I form.

抗原: A synthetic peptide of human MAP1LC3A

经过测试的应用: WB,IP

推荐稀释比: WB: 1/500-1/1000 IP: 1/20

种属反应性: Rabbit

克隆性: Rabbit Monoclonal

克隆编号: R05-1B6

分子量: Calculated MW: 14 kDa; Observed MW: 14,16 kDa

亚型: IgG

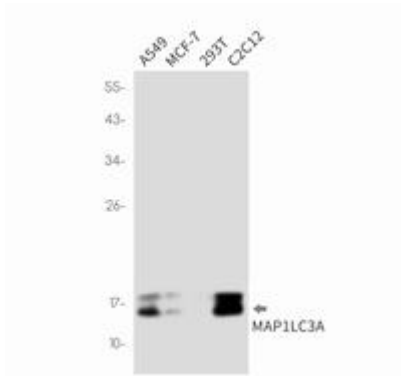
纯化: Affinity Purified

种属反应性: Human, Mouse and Rat

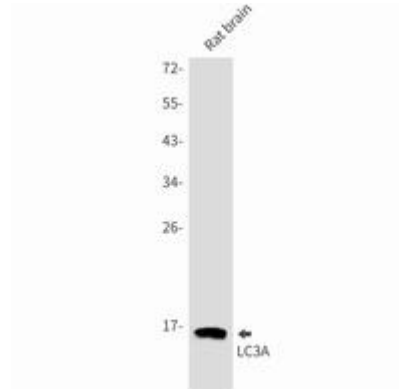
成分: PBS (without Mg<sup>2+</sup> and Ca<sup>2+</sup>), pH 7.3 containing 50% glycerol, 0.5% BSA and 0.02% sodium azide

研究领域: Signal Transduction

储存和运输: Store at -20°C. Avoid repeated freezing and thawing



Western blot analysis of LC3A in A549, MCF-7, 293T, C2C12 lysates using LC3A antibody.



Western blot analysis of LC3A in rat brain lysates using LC3A antibody.