

## LC3A (8F5) MOUSE MAB

货号: N261327

产品全名: LC3A (8F5) 小鼠单抗

基因符号 Microtubule-associated proteins 1A/1B light chain 3A;  
Autophagy-related protein LC3 A; Autophagy-related ubiquitin-like modifier  
LC3 A; MAP1 light chain 3-like protein 1; MAP1A/MAP1B light chain 3 A;  
MAP1A/MAP1B LC3 A; Microtubule-associated protein 1 light chain 3 alpha

**UNIPROT ID:** Q9H492

背景: Autophagy marker Light Chain 3 (LC3) was originally identified as a subunit of microtubule-associated proteins 1A and 1B (termed MAP1LC3), and subsequently found to contain similarity to the yeast protein Apg8/Aut7/Cvt5 critical for autophagy. Three human LC3 isoforms (LC3A, LC3B, and LC3C) undergo post-translational modifications during autophagy. Cleavage of LC3 at the carboxy terminus immediately following synthesis yields the cytosolic LC3-I form.

抗原: Purified recombinant protein expressed in E.coli.

经过测试的应用: WB,IHC-P

推荐稀释比: WB: 1/500-1/1000 IHC: 1/50-1/100

种属反应性: Mouse

克隆性: Mouse Monoclonal

克隆编号: 8F5-10H1-9A7

分子量: Calculated MW: 14 kDa; Observed MW: 14,16 kDa

亚型: IgG1

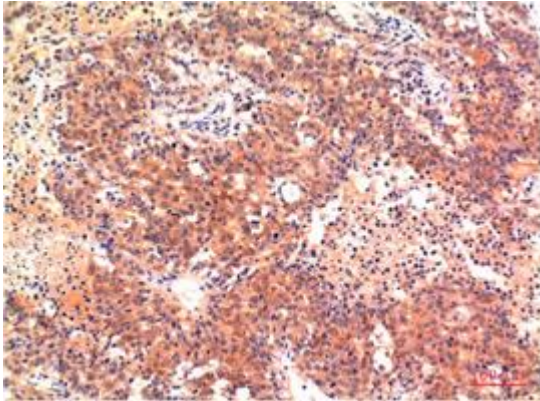
纯化: Affinity Purified

种属反应性: Human,Rat,Mouse

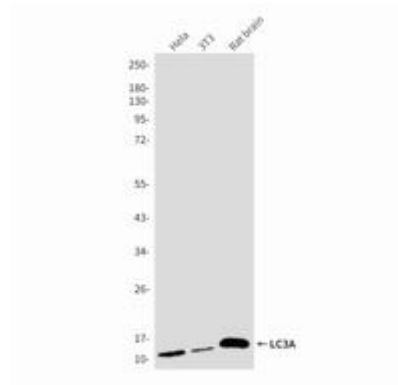
成分: PBS (without Mg<sup>2+</sup> and Ca<sup>2+</sup>), pH 7.3 containing 50% glycerol, 0.5% BSA and 0.02% sodium azide

研究领域: Autophag&yAutophagosome

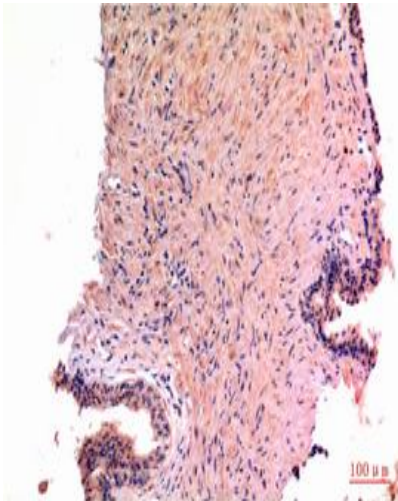
储存和运输: Store at -20°C. Avoid repeated freezing and thawing



Immunohistochemistry analysis of paraffin-embedded Human Hepatocarcinoma Tissue using LC3A antibody. High-pressure and temperature Sodium Citrate pH 6.0 was used for antigen retrieval.



Western blot analysis of LC3A (8F5) in Hela lysates, 3T3 lysates, rat Brain lysates using LC3A antibody.



Immunohistochemistry analysis of paraffin-embedded Human Prostate Carcinoma Tissue using LC3A antibody. High-pressure and temperature Sodium Citrate pH 6.0 was used for antigen retrieval.